

## Working Instructions

- mechanical -



**Xperia™ V**  
**LT25i**



**Xperia™ VC**  
**LT25c**

## CONTENTS

<b>1</b>	<b>Exterior Views.....</b>	<b>5</b>
1.1	LT25i .....	5
1.2	LT25c.....	6
<b>2</b>	<b>Tools .....</b>	<b>7</b>
<b>3</b>	<b>Disassembly.....</b>	<b>8</b>
3.1	Overview .....	8
3.2	Disassembly-LT25i Specific .....	9
3.2.1	Cover Battery Assy .....	9
3.2.2	Battery .....	9
3.2.3	Cover Rear Assy.....	10
3.2.4	Cap Micro USB.....	12
3.3	Disassembly-LT25c Specific .....	13
3.3.1	Cover Battery Assy .....	13
3.3.2	Battery .....	13
3.3.3	Cover Bottom.....	14
3.3.4	Cover Rear Assy.....	15
3.3.5	Cap Micro USB.....	16
3.4	Disassembly-LT25i/LT25c Common .....	17
3.4.1	Main Gasket .....	17
3.4.2	Sheet Side Key FPC.....	17
3.4.3	Relay Flex PBA Assy.....	17
3.4.4	Main Camera .....	18
3.4.5	Jack Flex PBA Assy .....	19
3.4.6	Touch/Display Front Cover Assy .....	20
3.4.7	Cable RF & Main PBA.....	21
<b>4</b>	<b>Replacement .....</b>	<b>22</b>
4.1	Replacement-LT25i/LT25c Common.....	22
4.1.1	Cable RF .....	22
4.1.2	Main Camera .....	22
4.1.3	Main Gasket .....	22
4.1.4	Relay Flex PBA Assy.....	22
4.1.5	Sheet Side Key FPC.....	23
4.1.6	Touch/Display Front Cover Assy .....	23
4.1.7	Audio Jack .....	25
4.1.8	Card Connector Tray.....	27
4.1.9	Charge Pad.....	28
4.1.10	Core Unit Label .....	30
4.1.11	Cushion 2nd Mic_WR.....	31
4.1.12	Cushion MIC2 PCB .....	33
4.1.13	Ear Speaker & Adhesive Earspeaker_WR .....	34
4.1.14	Foil Adhesive CAM .....	38
4.1.15	Jack Flex PBA Assy .....	40
4.1.16	Loudspeaker & Adhesive Speaker_WR .....	44
4.1.17	Sheet Shield NonCell.....	48
4.1.18	Side Key.....	49

4.1.19	Side Key Flex PBA Frame Assy_WR.....	50
4.1.20	Sub PBA Assy & Adhesive Sub PBA Assy .....	52
4.1.21	Board Swap - Replacement .....	56
4.1.22	Board Swap – Change Label .....	56
4.1.23	Board Swap – Customize of Software .....	56
4.2	Replacement-LT25i Specific.....	57
4.2.1	Cap Micro USB.....	57
4.2.2	Cover Battery Assy .....	57
4.2.3	Cover Rear Assy.....	57
4.2.4	Ant Diversity Flex & Adhesive ANT NonCell_WR .....	58
4.2.5	Cap Audio Jack.....	63
4.2.6	Net Speaker .....	65
4.2.7	Water Indicator .....	66
4.3	Replacement-LT25c Specific.....	68
4.3.1	Cap Micro USB.....	68
4.3.2	Cover Battery Assy .....	68
4.3.3	Cover Bottom.....	68
4.3.4	Cover Rear Assy.....	68
4.3.5	Cap Audio Jack.....	69
4.3.6	Cushion Sheet 1st Mic_WR .....	71
4.3.7	Cover Bottom Deco Silver .....	73
4.3.8	Net Speaker .....	74
4.3.9	Water Indicator .....	75
5	Reassembly.....	77
5.1	Overview .....	77
5.2	Reassembly-LT25i/LT25c Common .....	78
5.2.1	Cable RF & Main PBA.....	78
5.2.2	Touch/Display Front Cover Assy .....	78
5.2.3	Jack Flex PBA Assy .....	80
5.2.4	Main Camera .....	81
5.2.5	Relay Flex PBA Assy.....	82
5.2.6	Sheet Side Key FPC.....	85
5.2.7	Main Gasket .....	86
5.3	Reassembly-LT25i Specific .....	88
5.3.1	Cap Micro USB.....	88
5.3.2	Cover Rear Assy.....	88
5.3.3	Battery .....	92
5.3.4	Cover Battery Assy .....	92
5.4	Reassembly-LT25c Specific .....	95
5.4.1	Cap Micro USB.....	95
5.4.2	Cover Rear Assy.....	95
5.4.3	Cover Bottom.....	99
5.4.4	Battery .....	100
5.4.5	Cover Battery Assy .....	101
6	Revision History .....	104

***For general information about mechanical repair related issues, refer to  
1220-1333: Generic Repair Manual - mechanical  
LT25i and LT25c share the same repair method in the following common sections whose pictures  
are taken with LT25c.***

## 1 Exterior Views

### 1.1 LT25i



## Exterior Views

### 1.2 LT25c



## 2 Tools

### SPECIAL TOOLS

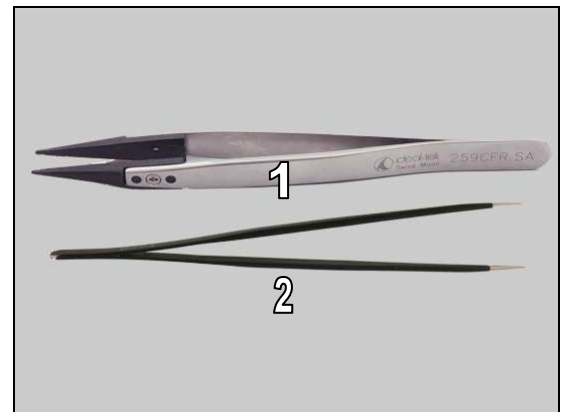
1. Torque Screwdriver
2. Flex Film Assembly Tool
3. Bits (T5)
4. Bits (JCIS No 0)
5. Front Opening Tool
6. Guitar Pick
7. Finger Cots
8. Press Tool Earspeaker
9. Press Tool Loudspeaker
10. Sub Antenna Press Insert
11. Pressure Tool



**For part no's on the tools above, refer to the 'Tools Catalogue/Matrix'!**

### STANDARD TOOLS

1. Plastic Tweezers
2. Tweezers

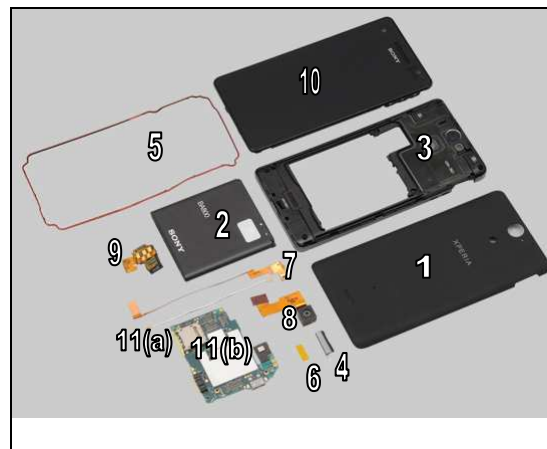


## 3 Disassembly

### 3.1 Overview

The LT25i disassembly is done in the following order:

1. Cover Battery Assy
2. Battery
3. Cover Rear Assy
4. Cap Micro USB
5. Main Gasket
6. Sheet Side Key FPC
7. Relay Flex PBA Assy
8. Main Camera
9. Jack Flex PBA Assy
10. Touch/Display Front Cover Assy
11. Cable RF (a) & Main PBA (b)

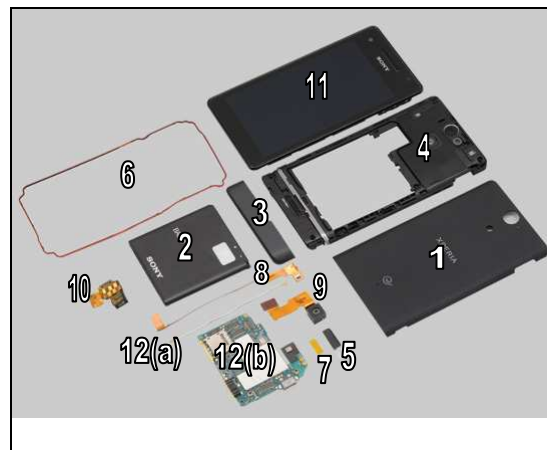


The order 1 – 4 refers to 3.2.1 – 3.2.4.

The order 5 – 11 refers to 3.4.1 – 3.4.7.

The LT25c disassembly is done in the following order:

1. Cover Battery Assy
2. Battery
3. Cover Bottom
4. Cover Rear Assy
5. Cap Micro USB
6. Main Gasket
7. Sheet Side Key FPC
8. Relay Flex PBA Assy
9. Main Camera
10. Jack Flex PBA Assy
11. Touch/Display Front Cover Assy
12. Cable RF (a) & Main PBA (b)



The order 1 – 5 refers to 3.3.1 – 3.3.5.

The order 6 – 12 refers to 3.4.1 – 3.4.7.



## Disassembly

### 3.2 Disassembly-LT25i Specific

#### 3.2.1 Cover Battery Assy

Insert the Guitar Pick into the gap as shown in the picture and gently pull upwards to release the Cover Battery Assy.



Lift up the Cover Battery Assy to remove it with fingers.



#### 3.2.2 Battery

Insert the Front Opening Tool as shown and raise the bottom of the battery to release it.



Remove the battery.



## Disassembly

### 3.2.3 Cover Rear Assy

Pull out the Card Connector Tray with fingers.



Remove the two Screw Len:3.2 Diam:1.4 M by using a screwdriver with Bits (JCIS No 0).

**Scrap! Not to be reused!**



Remove the four Screw Len:5.0 Diam:1.4 by using a screwdriver with Bits (T5).

**Scrap! Not to be reused!**



Insert the Guitar Pick as shown in the picture and gently slide back and forth to release the bottom side of the Cover Rear Assy.



## Disassembly

Do the same on this side.



Do the same on the opposite side.

**Stop here and do not damage the Side Key Frame!**

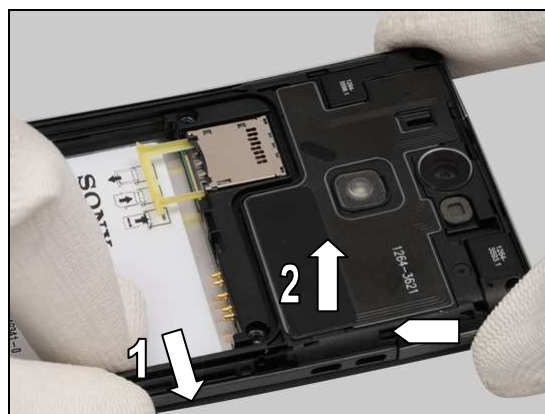


Do the same on the top side.

**Stop here and do not damage the Side Key Frame!**



1. Pull outwards from this side of the Cover Rear Assy as shown in the picture;
2. Pull upwards to release this hook.



## Disassembly

Do the same to release this hook.

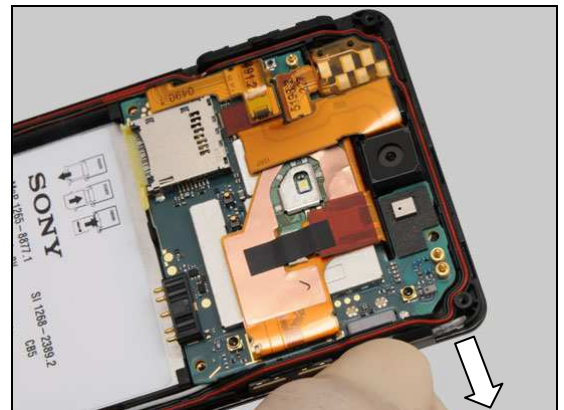


Remove the Cover Rear Assy.



### 3.2.4 Cap Micro USB

Wear the new Finger Cots and remove the Cap Micro USB.



## Disassembly

### 3.3 Disassembly-LT25c Specific

#### 3.3.1 Cover Battery Assy

Insert a Guitar Pick into the gap as shown in picture and gently pull upwards to release the hooks of the Cover Battery Assy.



Remove the Cover Battery Assy.



#### 3.3.2 Battery

Insert the Front Opening Tool as shown and raise the bottom of the battery to release it.



Remove the battery.





## Disassembly

### 3.3.3 Cover Bottom

Insert the Guitar Pick between the Cover Bottom and the Touch/Display Front Cover Assy as shown in the picture and gently pull upwards to release the hook.



Gently slide back and forth as shown in the picture to release the hooks of the Cover Bottom.



Slowly lift up the Cover Bottom as shown in the picture.

**Do not damage the antenna on the Cover Rear Assy!**



Remove the Cover Bottom.

**Scrap! Not to be reused!**



## Disassembly

### 3.3.4 Cover Rear Assy

Pull out the Card Connector Tray with fingers.



Remove the two Screw Len:3.2 Diam:1.4 M by using a screwdriver with Bits (JCIS No 0).

**Scrap! Not to be reused!**



Remove the four Screw Len:5.0 Diam:1.4 by using a screwdriver with Bits (T5).

**Scrap! Not to be reused!**



Gently insert the Guitar Pick as shown in the picture and gently slide back and forth to release this side of the Cover Rear Assy.



## Disassembly

Do the same on the opposite side.

**Stop here and do not damage the Side Key Frame!**



Do the same on the top side.

**Stop here and do not damage the Side Key Frame!**

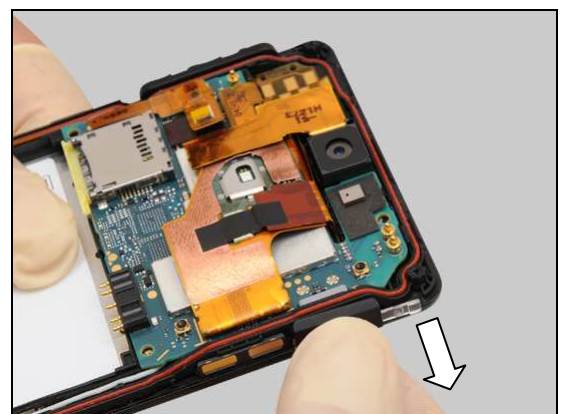


Raise the Cover Rear Assy from the top side and remove it with fingers.



### 3.3.5 Cap Micro USB

Wear the new Finger Cots and gently remove the Cap Micro USB.





## Disassembly

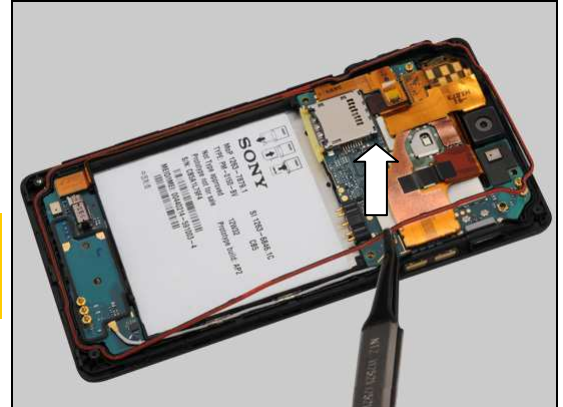
### 3.4 Disassembly-LT25i/LT25c Common

#### 3.4.1 Main Gasket

Gently lift up the Main Gasket to remove it by using the Flex Film Assembly Tool.

**Do not damage the Main Gasket!**

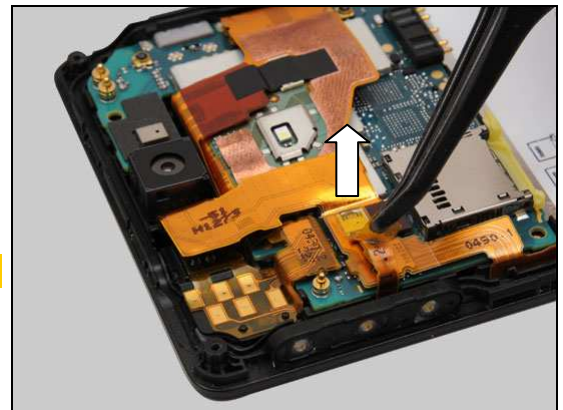
**Make sure the Main Gasket is clean, no dirt, particles and fiber attached on it!**



#### 3.4.2 Sheet Side Key FPC

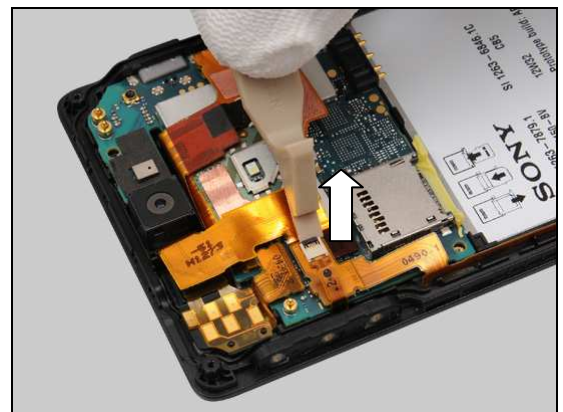
Gently peel off the Sheet Side Key FPC by using the Flex Film Assembly Tool.

**Scrap! Not to be reused!**



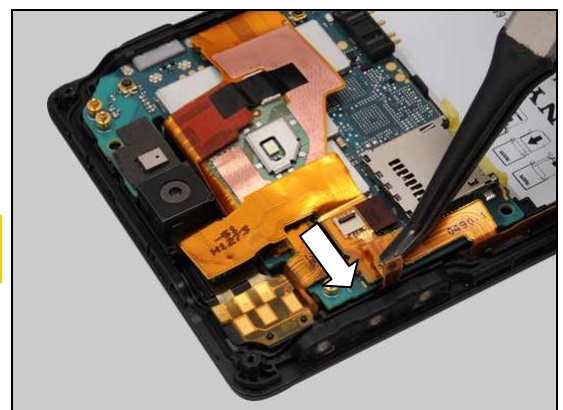
#### 3.4.3 Relay Flex PBA Assy

Unlock the ZIF connector on the Relay Flex PBA Assy by using the Front Opening Tool.



Release the flex part of the Side Key Flex PBA Frame Assy\_WR by using the Flex Film Assembly Tool.

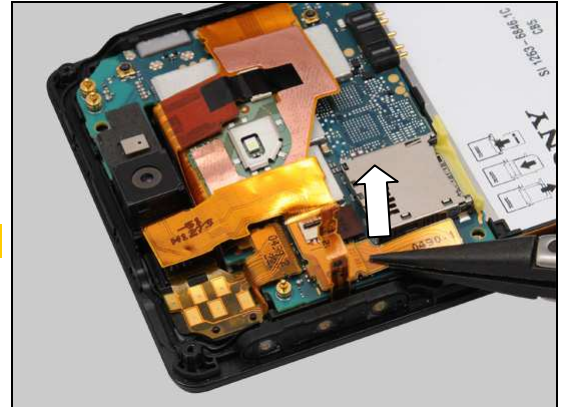
**Be careful! Do not stretch the Side Key Flex PBA Frame Assy\_WR FPC!**



## Disassembly

Disconnect the BtB connector by using the Plastic Tweezers.

**Do not damage components on the Main PBA!**



Do the same to release the second BtB connector of the Relay Flex PBA Assy.



Remove the Relay Flex PBA Assy from its cavity by using the Plastic Tweezers.



### 3.4.4 Main Camera

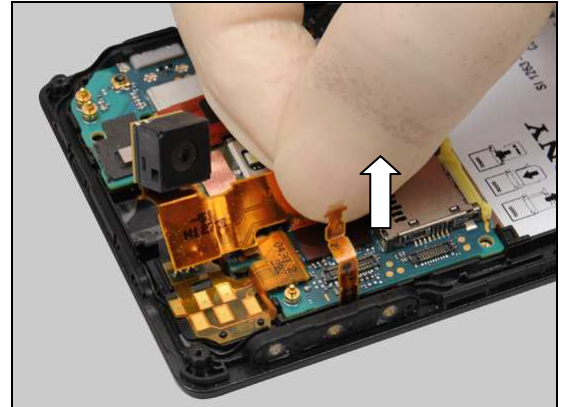
Wear the Finger Cots and lift up the head of the Main Camera from its cavity.

**Do not touch the camera lens!**

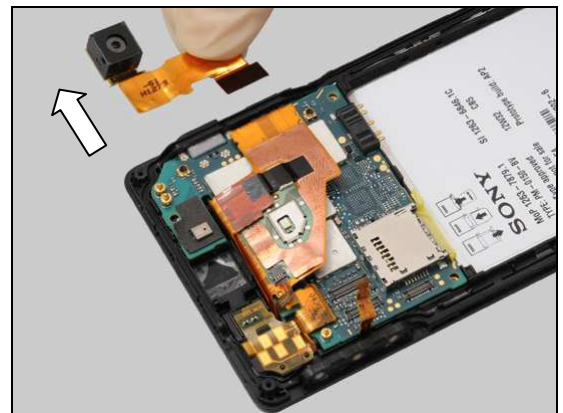


## Disassembly

Disconnect the BtB connector as shown in the picture.



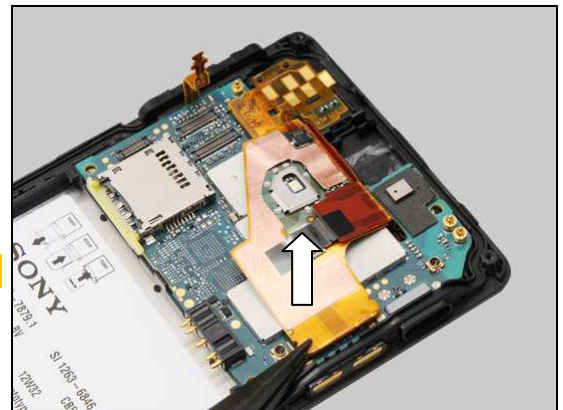
Remove the Main Camera.



### 3.4.5 Jack Flex PBA Assy

Disconnect the BtB connector of the display FPC by using the Plastic Tweezers.

**Do not damage components on the Main PBA!**



Disconnect the BtB connector from this side as shown in the picture by using the Plastic Tweezers.

**Do not damage components on the Main PBA!**

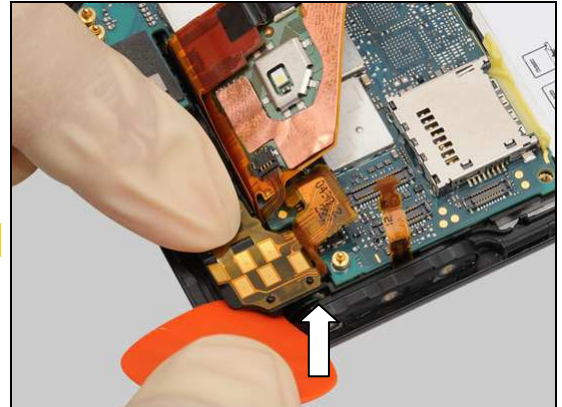




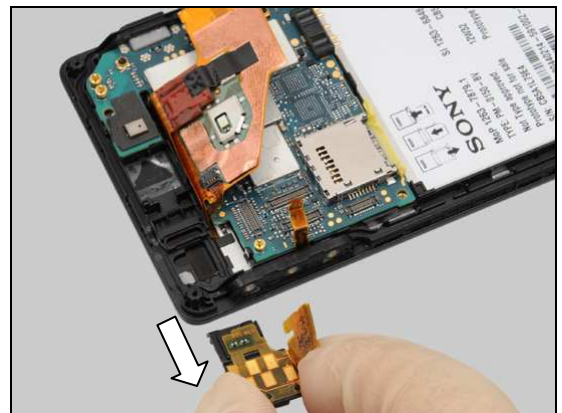
## Disassembly

Wear Finger Cots and gently insert the Guitar Pick as shown in the picture to release the hook.

**Do not damage the components below the finger!**



Remove the Jack Flex PBA Assy.



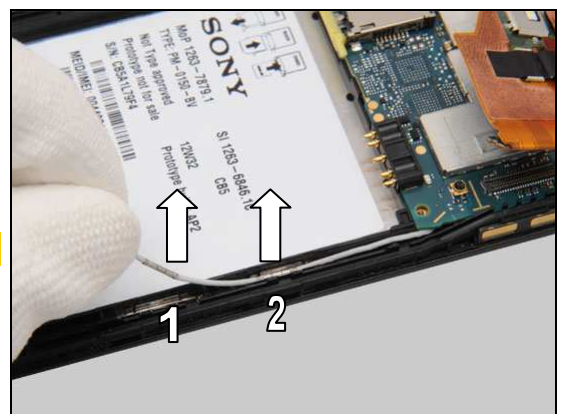
### 3.4.6 Touch/Display Front Cover Assy

Disconnect the Cable RF connector by using the Flex Film Assembly Tool.



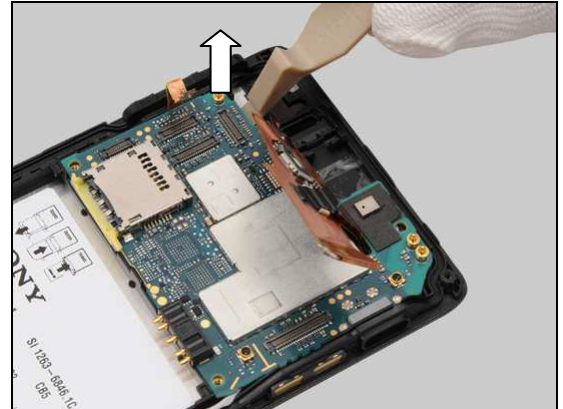
Release the Cable RF from its cavity as shown in the picture.

**Do not stretch the Cable RF!**

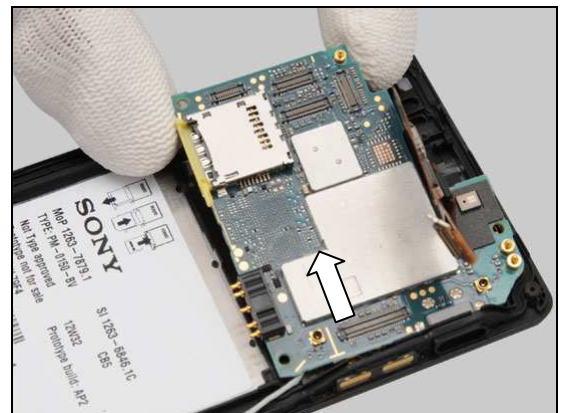


## Disassembly

Insert the Front Opening Tool to release this hook of the main PBA.

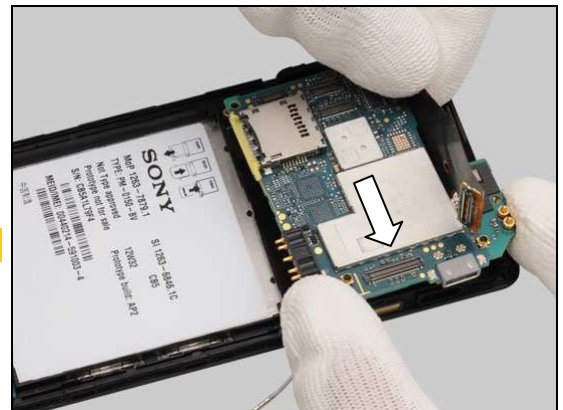


Release the USB connector from its hole as shown in the picture.



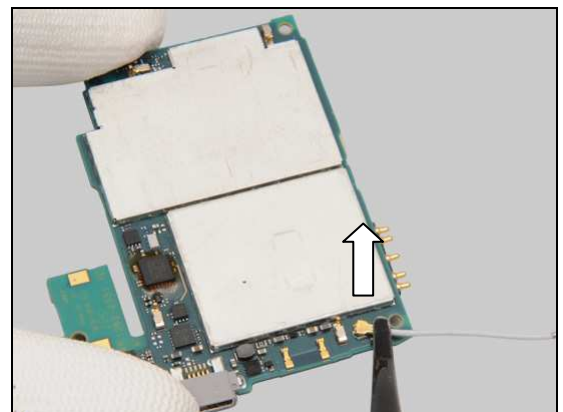
Separate the Touch/Display Cover Front Assy and Cable RF & Main PBA as shown in the picture.

**Do not stretch the display FPC!**



### 3.4.7 Cable RF & Main PBA

Disconnect the Cable RF connector and remove the Cable RF by using the Flex Film Assembly Tool.



## 4 Replacement

### 4.1 Replacement-LT25i/LT25c Common

#### 4.1.1 Cable RF

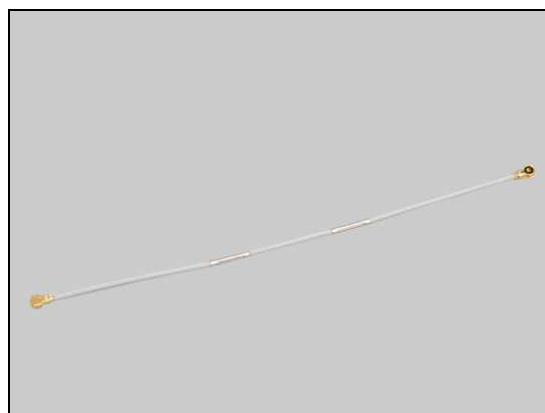
*LT25i follow the 3.2.1 – 3.2.4, 3.4.1 – 3.4.7 Disassembly instructions!*

*LT25c follow the 3.3.1 – 3.3.5, 3.4.1 – 3.4.7 Disassembly instructions!*

Prepare a new Cable RF.

*LT25i follow the 5.2.1 – 5.2.7, 5.3.1 – 5.3.4 Reassembly instructions!*

*LT25c follow the 5.2.1 – 5.2.7, 5.4.1 – 5.4.5 Reassembly instructions!*



#### 4.1.2 Main Camera

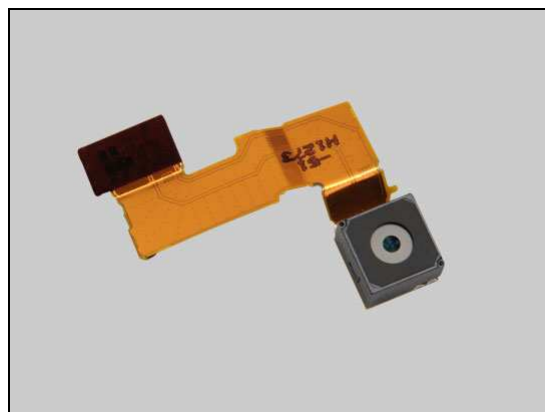
*LT25i follow the 3.2.1 – 3.2.4, 3.4.1 – 3.4.4 Disassembly instructions!*

*LT25c follow the 3.3.1 – 3.3.5, 3.4.1 – 3.4.4 Disassembly instructions!*

Prepare a new Main Camera.

*LT25i follow the 5.2.4 – 5.2.7, 5.3.1 – 5.3.4 Reassembly instructions!*

*LT25c follow the 5.2.4 – 5.2.7, 5.4.1 – 5.4.5 Reassembly instructions!*



#### 4.1.3 Main Gasket

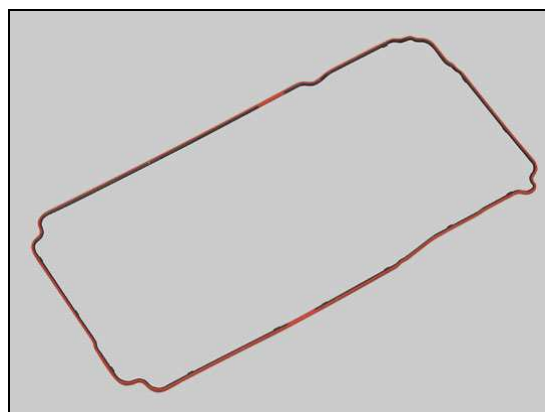
*LT25i follow the 3.2.1 – 3.2.4, 3.4.1 Disassembly instructions!*

*LT25c follow the 3.3.1 – 3.3.5, 3.4.1 Disassembly instructions!*

Prepare a new Main Gasket.

*LT25i follow the 5.2.7, 5.3.1 – 5.3.4 Reassembly instructions!*

*LT25c follow the 5.2.7, 5.4.1 – 5.4.5 Reassembly instructions!*



#### 4.1.4 Relay Flex PBA Assy

*LT25i follow the 3.2.1 – 3.2.4, 3.4.1 – 3.4.3 Disassembly instructions!*

*LT25c follow the 3.3.1 – 3.3.5, 3.4.1 – 3.4.3 Disassembly instructions!*

Prepare a new Relay Flex PBA Assy.

*LT25i follow the 5.2.5 – 5.2.7, 5.3.1 – 5.3.4 Reassembly instructions!*

*LT25c follow the 5.2.5 – 5.2.7, 5.4.1 – 5.4.5 Reassembly instructions!*



## Replacement

### 4.1.5 Sheet Side Key FPC

*LT25i follow the 3.2.1 – 3.2.4, 3.4.1 – 3.4.2 Disassembly instructions!*

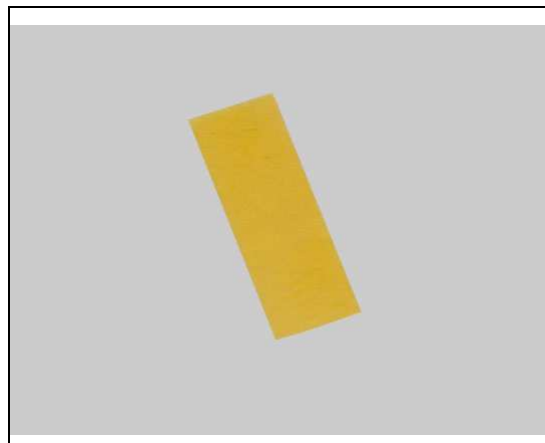
*LT25c follow the 3.3.1 – 3.3.5, 3.4.1 – 3.4.2 Disassembly instructions!*

Prepare a new Sheet Side Key FPC.

*LT25i follow the 5.2.6 – 5.2.7, 5.3.1 – 5.3.4 Reassembly instructions!*

*LT25c follow the 5.2.6 – 5.2.7, 5.4.1 – 5.4.5 Reassembly instructions!*

**Scrap! Not to be reused!**



### 4.1.6 Touch/Display Front Cover Assy

*LT25i follow the 3.2.1 – 3.2.4, 3.4.1 – 3.4.6 Disassembly instructions!*

*LT25c follow the 3.3.1 – 3.3.5, 3.4.1 – 3.4.6 Disassembly instructions!*

*Follow the 4.1.19, 4.1.20 Removal instructions!*

Prepare a new Touch/Display Front Cover Assy.

*Follow the 4.1.19, 4.1.20, 4.1.10 Installation instructions!*

*LT25i follow the 5.2.2 – 5.2.7, 5.3.1 – 5.3.4 Reassembly instructions!*

*LT25c follow the 5.2.2 – 5.2.7, 5.4.1 – 5.4.5 Reassembly instructions!*

**The new Ear Speaker, Charge Pad, Foil Adhesive CAM and Adhesive Sub PBA Assy are mounted in the new Touch/Display Front Cover Assy.**

**Touch Vendor ID Writing and LCD reset SW must be performed for all replaced units; 1257-2706 Trouble Shooting Application – mechanical.**







## Replacement

### 4.1.7 Audio Jack

*LT25i follow the 3.2.1 – 3.2.4, 3.4.1 Disassembly instructions!*

*LT25c follow the 3.3.1 – 3.3.5, 3.4.1 Disassembly instructions!*

Carry out the Removal as described below.

Prepare a new Audio Jack.

Carry out the Installation as described below.

*LT25i follow the 5.2.7, 5.3.1 – 5.3.4 Reassembly instructions!*

*LT25c follow the 5.2.7, 5.4.1 – 5.4.5 Reassembly instructions!*

#### REMOVAL

Push upwards to release the Audio Jack from its cavity and remove it by using the Flex Film Assembly Tool.



#### INSTALLATION

Place a new Audio Jack into the socket by using the Flex Film Assembly Tool.



Gently push inwards the Audio Jack to secure its position as shown in the picture.



## Replacement: Audio Jack

Press to secure its position.

***Do not touch the contact pins!***



## Replacement

### 4.1.8 Card Connector Tray

*LT25i follow the 3.2.1 – 3.2.2 Disassembly instructions!*

*LT25c follow the 3.3.1 – 3.3.2 Disassembly instructions!*

Carry out the Removal as described below.

Prepare a new Card Connector Tray.

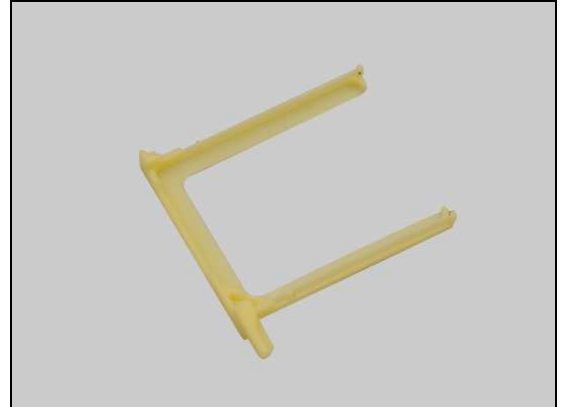
Carry out the Installation as described below.

*LT25i follow the 5.3.3 – 5.3.4 Disassembly instructions!*

*LT25c follow the 5.4.4 – 5.4.5 Disassembly instructions!*

#### REMOVAL

Gently pull out the Card Connector Tray from its cavity and remove it.



#### INSTALLATION

Place a new Card Connector Tray into its slot.

**Make sure the correct direction of the Card Connector Tray!**



Gently push the Card Connector Tray to the bottom.



## Replacement

### 4.1.9 Charge Pad

*LT25i follow the 3.2.1 – 3.2.4, 3.4.1 – 3.4.7 Disassembly instructions!*

*LT25c follow the 3.3.1 – 3.3.5, 3.4.1 – 3.4.7 Disassembly instructions!*

Carry out the Removal as described below.

Prepare a new Charge Pad.

Carry out the Installation as described below.

*LT25i follow the 5.2.1 – 5.2.7, 5.3.1 – 5.3.4 Reassembly instructions!*

*LT25c follow the 5.2.1 – 5.2.7, 5.4.1 – 5.4.5 Reassembly instructions!*

### REMOVAL

Insert the Flex Film Assembly Tool from this position to loosen the Charge Pad as shown in the picture.

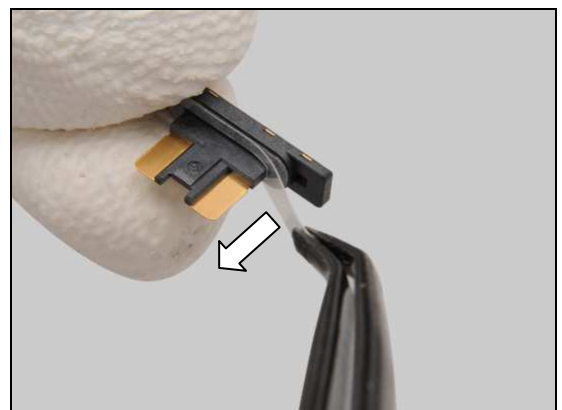
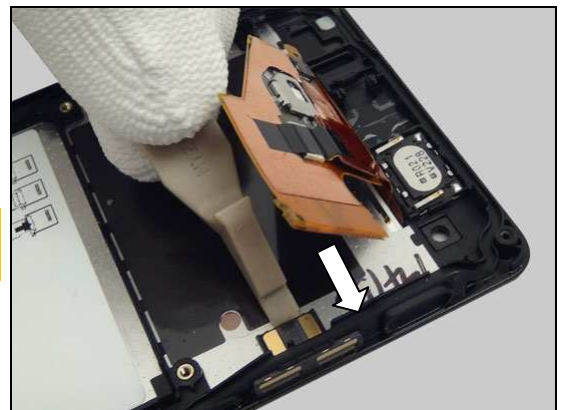
Push to remove the Charge Pad by using the Front Opening Tool as shown in the picture.

**Scrap! Not to be reused!**

**Do not stretch the display FPC in this operation!**

### INSTALLATION

Prepare a new Charge Pad and peel off the protective film.

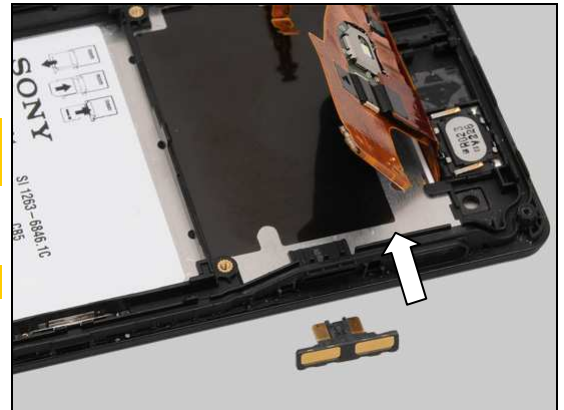


## Replacement: Charge Pad

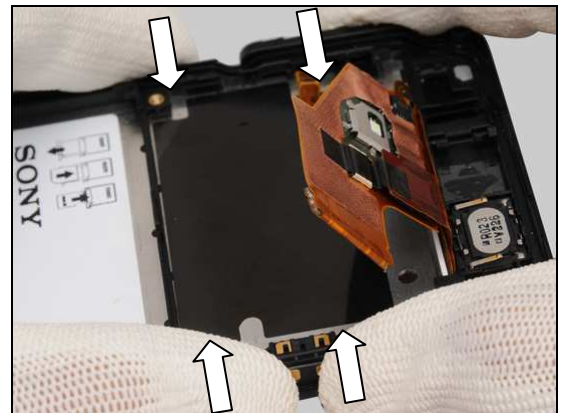
**Clean the adhesive residues on the Touch/Display Front Cover Assy before assembly!**

Place the Charge Pad into its slot as shown in the picture.

**Make sure the correct direction of the Charge Pad!**



Press the Charge Pad hard as shown in the picture for 10 seconds to secure its attachment.





## Replacement

### 4.1.10 Core Unit Label

*LT25i follow the 3.2.1 – 3.2.2 Disassembly instructions!*

*LT25c follow the 3.3.1 – 3.3.2 Disassembly instructions!*

Carry out the Removal as described below.

Prepare a new Core Unit Label.

Carry out the Installation as described below.

*LT25i follow the 5.3.3 – 5.3.4 Disassembly instructions!*

*LT25c follow the 5.4.4 – 5.4.5 Disassembly instructions!*

#### REMOVAL

Read the old Core Unit Label and/or write the information into the 'LabelMake' program before removal.

Carefully remove the Core Unit Label by using the Flex Film Assembly Tool.

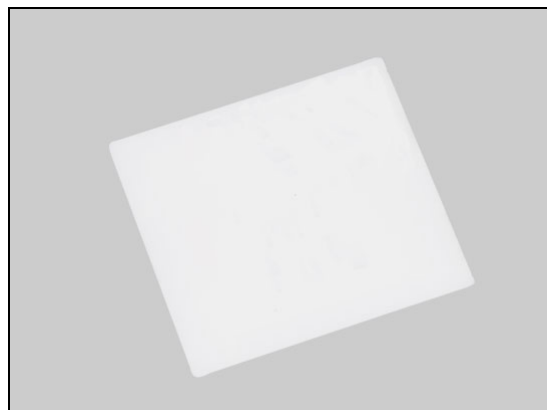
**Scrap! Not to be reused!**

#### INSTALLATION

Check that the label format is properly loaded in the Zebra printer and write a new Label using the 'Label Make' software.

Attach a new Core Unit Label on its proper position aligning by the guide line as shown in the picture.

Press to secure its attachment.



## Replacement

### 4.1.11 Cushion 2nd Mic\_WR

*LT25i follow the 3.2.1 – 3.2.2 Disassembly instructions!*

*LT25c follow the 3.3.1 – 3.3.2 Disassembly instructions!*

Carry out the Removal as described below.

Prepare a new Cushion 2nd Mic\_WR.

Carry out the Installation as described below.

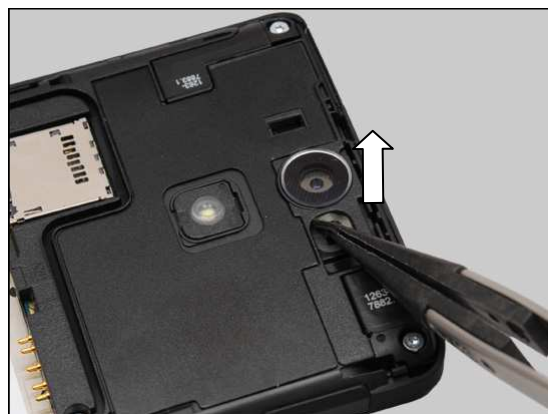
*LT25i follow the 5.3.3 – 5.3.4 Disassembly instructions!*

*LT25c follow the 5.4.4 – 5.4.5 Disassembly instructions!*

#### REMOVAL

Peel off the Cushion 2nd Mic\_WR by using a pair of Plastic Tweezers.

**Scrap! Not to be reused!**



Detach to remove the remains by using the Front Opening Tool.

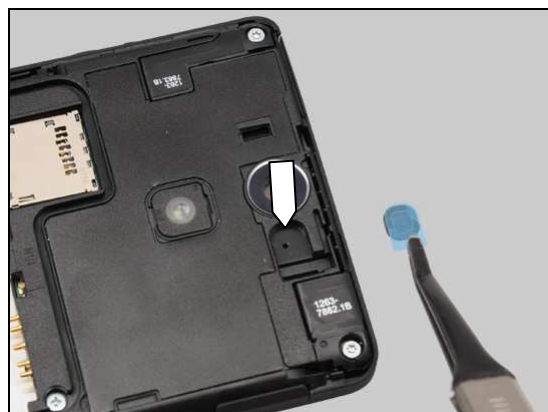
**Make sure all remains have been removed!**

**Do not scratch the plastic surface!**



#### INSTALLATION

Place a new Cushion 2nd Mic\_WR on the correct position.

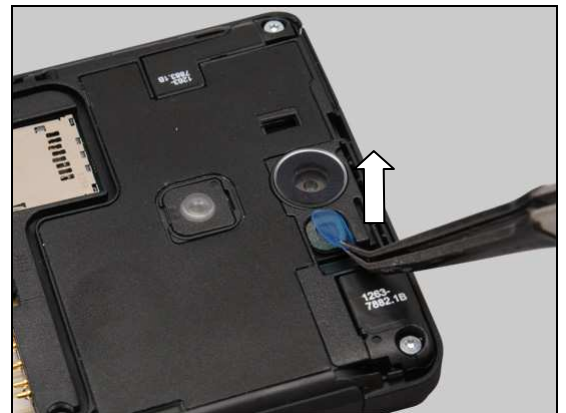


## Replacement: Cushion 2nd Mic\_WR

Press along to secure its attachment.



Peel off the protective film.





## Replacement

### 4.1.12 Cushion MIC2 PCB

*LT25i follow the 3.2.1 – 3.2.4, 3.4.1 Disassembly instructions!*

*LT25c follow the 3.3.1 – 3.3.5, 3.4.1 Disassembly instructions!*

Carry out the Removal as described below.

Prepare a new Cushion MIC2 PCB.

Carry out the Installation as described below.

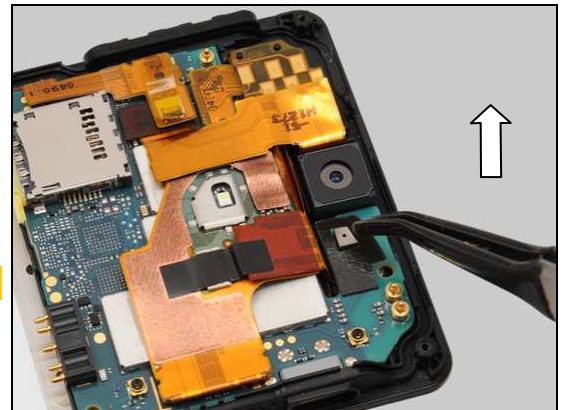
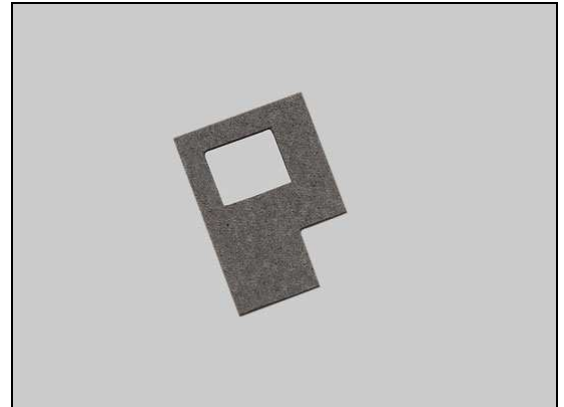
*LT25i follow the 5.2.7, 5.3.1 – 5.3.4 Disassembly instructions!*

*LT25c follow the 5.2.7, 5.4.1 – 5.4.5 Disassembly instructions!*

#### REMOVAL

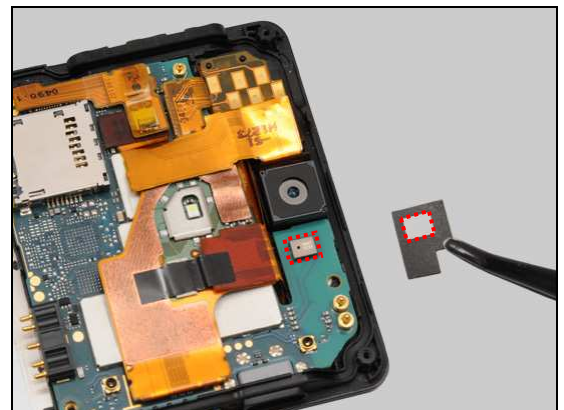
Peel off the Cushion MIC2 PCB by using the Flex Film Assembly Tool.

**Scrap! Not to be reused!**

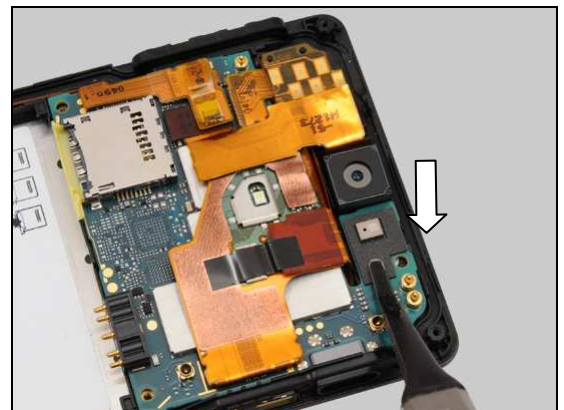


#### INSTALLATION

Place a new Cushion MIC2 PCB aligning by the Microphone on the Main PBA as shown in the picture.



Press along to secure its attachment.



## Replacement

### 4.1.13 Ear Speaker & Adhesive Earspeaker\_WR

*LT25i follow the 3.2.1 – 3.2.4, 3.4.1 – 3.4.7 Disassembly instructions!*

*LT25c follow the 3.3.1 – 3.3.5, 3.4.1 – 3.4.7 Disassembly instructions!*

Carry out the Removal as described below.

Prepare a new Ear Speaker & Adhesive Earspeaker\_WR.

Carry out the Installation as described below.

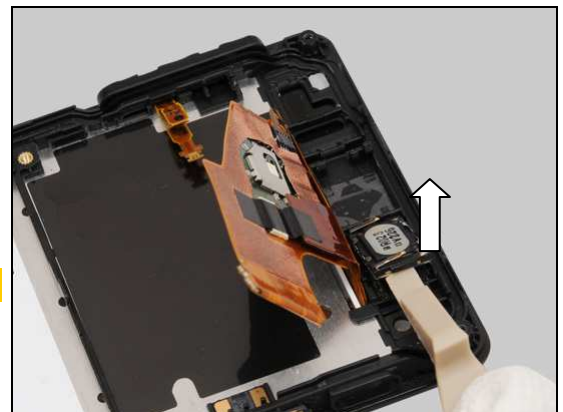
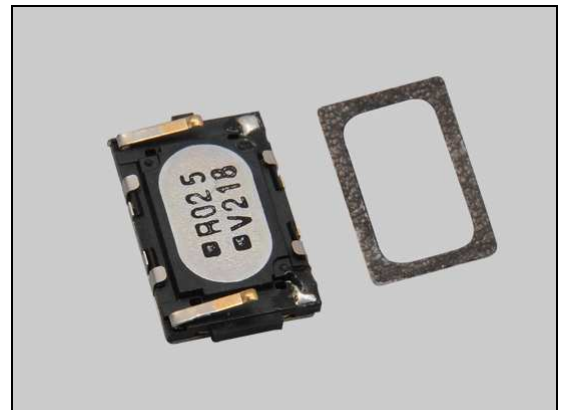
*LT25i follow the 5.2.1 – 5.2.7, 5.3.1 – 5.3.4 Reassembly instructions!*

*LT25c follow the 5.2.1 – 5.2.7, 5.4.1 – 5.4.5 Reassembly instructions!*

#### REMOVAL

Detach to remove the Ear Speaker by using the Front Opening Tool.

**Scrap! Not to be reused!**



Detach to remove the Adhesive Earspeaker\_WR by using the Front Opening Tool.

**Scrap! Not to be reused!**

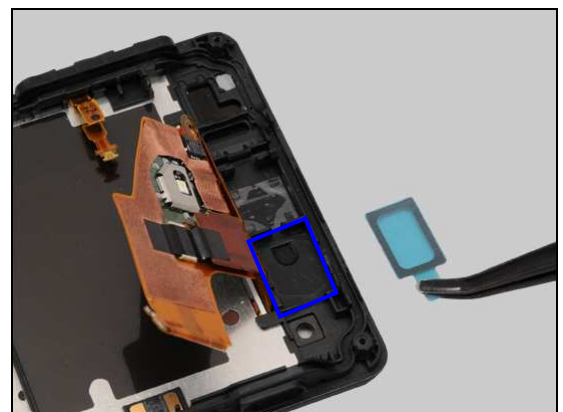
**Make sure all remains have been removed!**

**Do not scratch the plastic surface!**



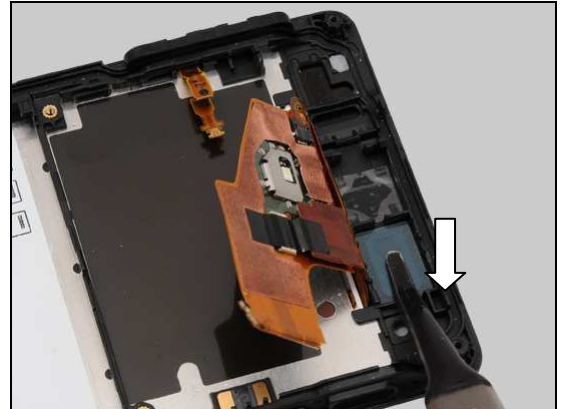
#### INSTALLATION

Place a new Adhesive Earspeaker\_WR into its cavity.

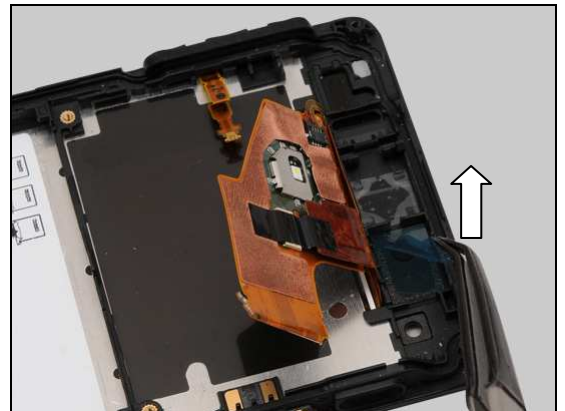


## Replacement: Ear Speaker & Adhesive Earspeaker\_WR

Press along to secure its attachment.

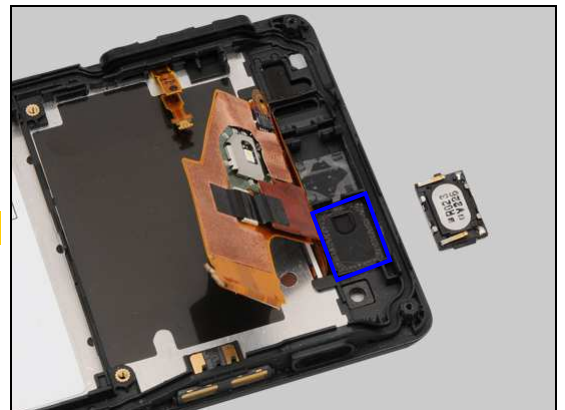


Gently peel off the protective film.



Place a new Ear Speaker into the cavity.

**Note the orientation of the Ear Speaker to be installed!**



Prepare the Press Tool Earspeaker.

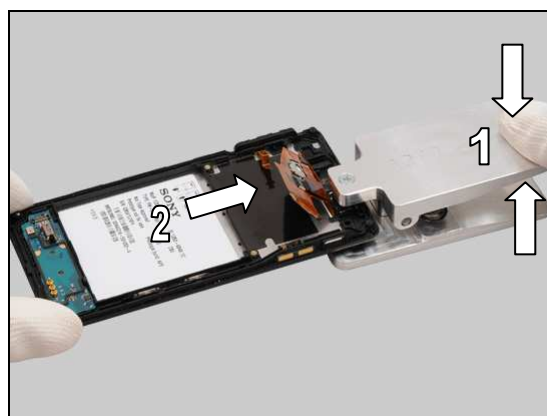


## Replacement: Ear Speaker & Adhesive Earspeak\_WR

Make sure the press rubber of the tool press the centre of the Ear Speaker.



Hold the clip and position the press rubber on the center area of the Ear Speaker.

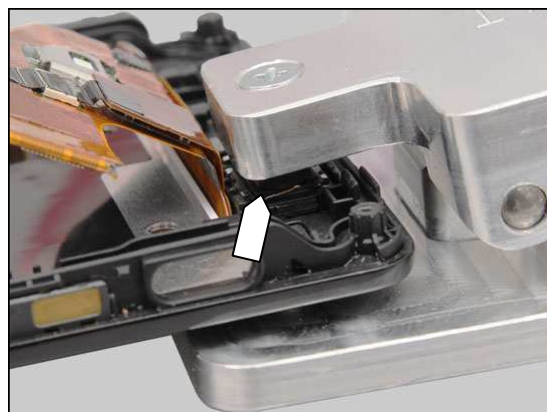


Loosen the clip to press the Ear Speaker for 10 seconds.

***Do not press the clip!***

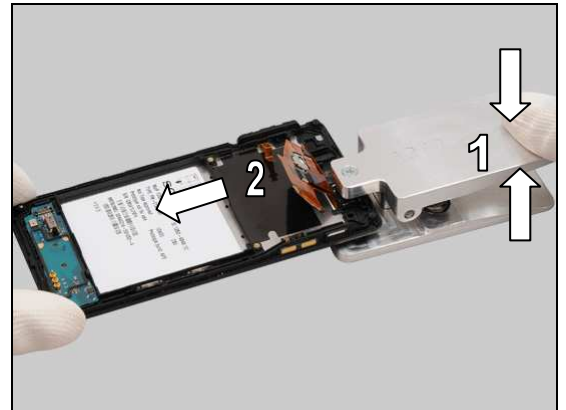


The rubber of the tool presses the Ear Speaker when pressing as shown.



## Replacement: Ear Speaker & Adhesive Earspeak\_WR

Press the clip and remove the Touch/Display Front Cover Assy.





## Replacement

### 4.1.14 Foil Adhesive CAM

*LT25i follow the 3.2.1 – 3.2.4, 3.4.1 – 3.4.4 Disassembly instructions!*

*LT25c follow the 3.3.1 – 3.3.5, 3.4.1 – 3.4.4 Disassembly instructions!*

Carry out the Removal as described below.

Prepare a new Foil Adhesive CAM.

Carry out the Installation as described below.

*LT25i follow the 5.2.4 – 5.2.7, 5.3.1 – 5.3.4 Reassembly instructions!*

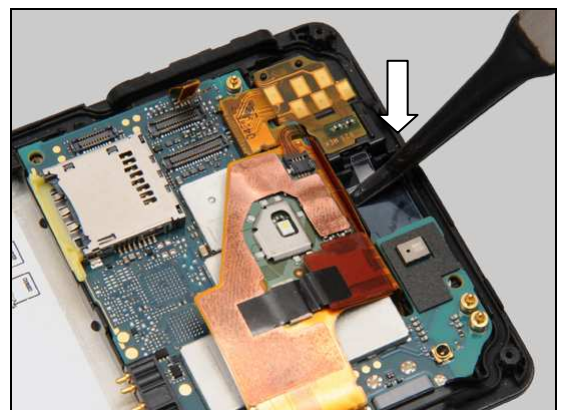
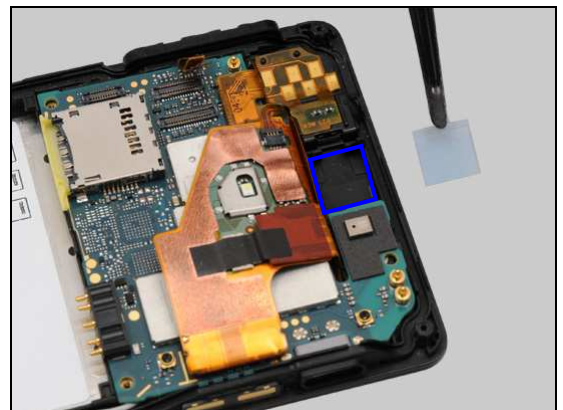
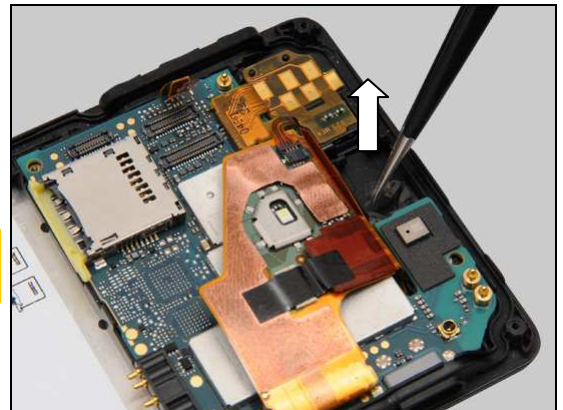
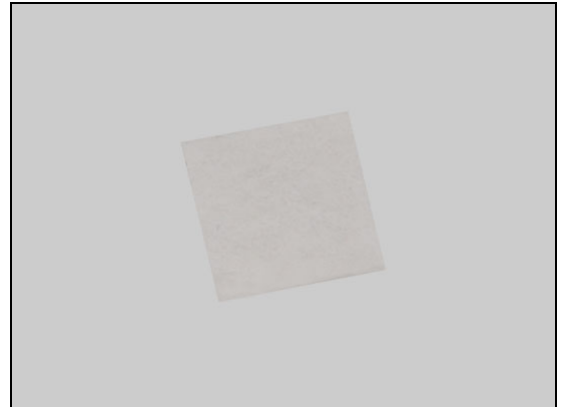
*LT25c follow the 5.2.4 – 5.2.7, 5.4.1 – 5.4.5 Reassembly instructions!*

#### REMOVAL

Peel off the Foil Adhesive CAM by using the Tweezers.

**Scrap! Not to be reused!**

**Make sure all remains have been removed!**



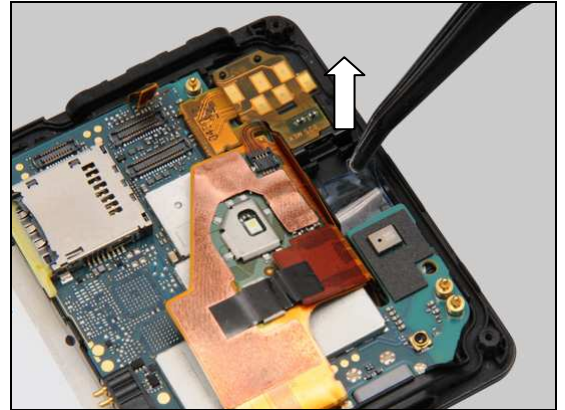
#### INSTALLATION

Place a new Foil Adhesive CAM into its cavity.

Press along to secure its attachment.

## Replacement: Foil Adhesive CAM

Peel off the protective film.



## Replacement

### 4.1.15 Jack Flex PBA Assy

*LT25i follow the 3.2.1 – 3.2.4, 3.4.1 – 3.4.5 Disassembly instructions!*

*LT25c follow the 3.3.1 – 3.3.5, 3.4.1 – 3.4.5 Disassembly instructions!*

Carry out the Removal as described below.

Prepare a new Jack Flex PBA Assy.

Carry out the Installation as described below.

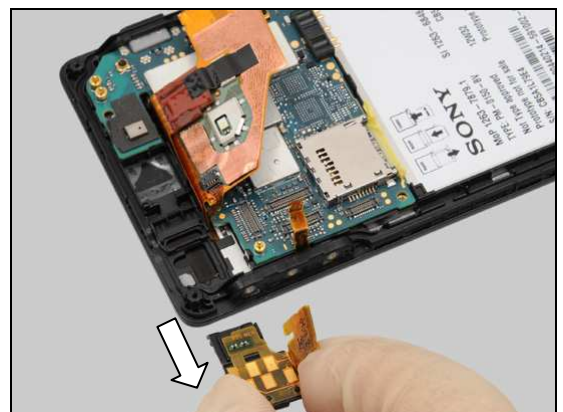
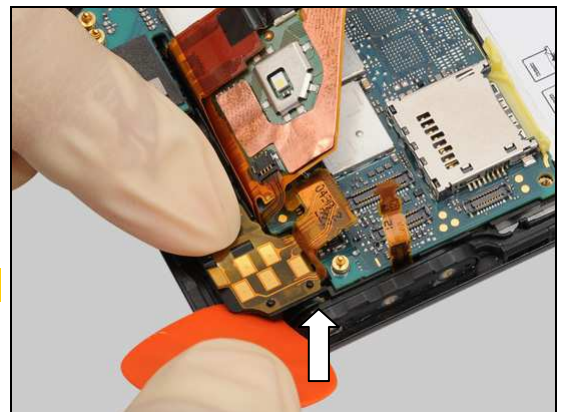
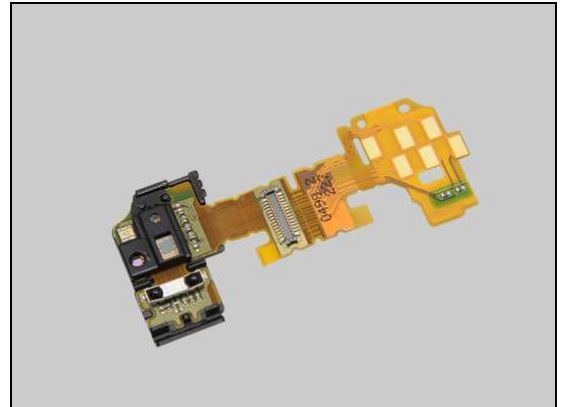
*LT25i follow the 5.2.3 – 5.2.7, 5.3.1 – 5.3.4 Reassembly instructions!*

*LT25c follow the 5.2.3 – 5.2.7, 5.4.1 – 5.4.5 Reassembly instructions!*

#### REMOVAL

Wear Finger Cots and gently insert the Guitar Pick as shown in the picture to release the hook.

**Do not damage the components below the finger!**

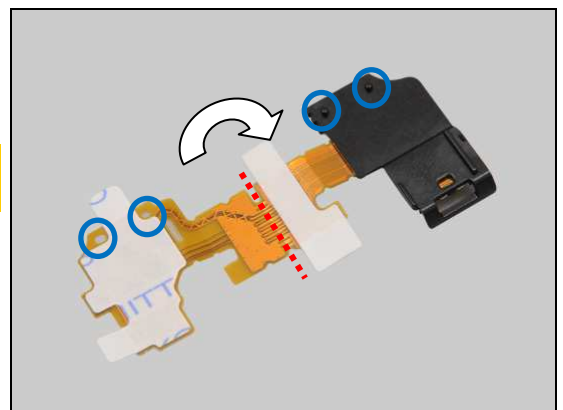


Remove the Jack Flex PBA Assy.

#### INSTALLATION

**Do not damage the components on the Jack Flex PBA Assy when assembly!**

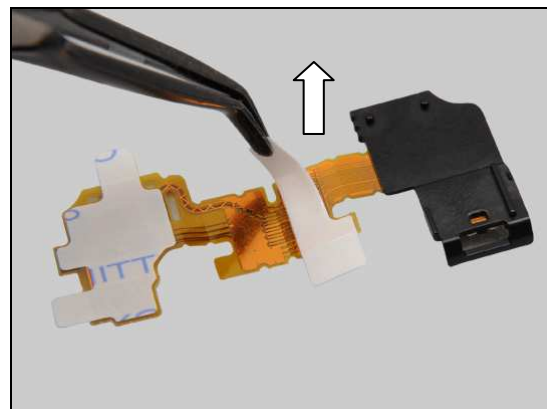
Prepare a new Jack Flex PBA Assy and pre-bend the FPC by aligning the guiding holes and pegs as shown in the picture.



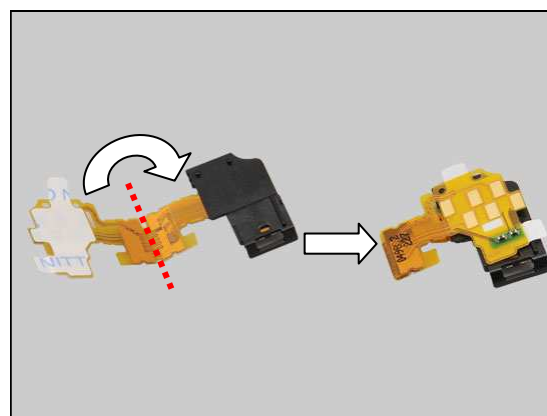


## Replacement: Jack Flex PBA Assy

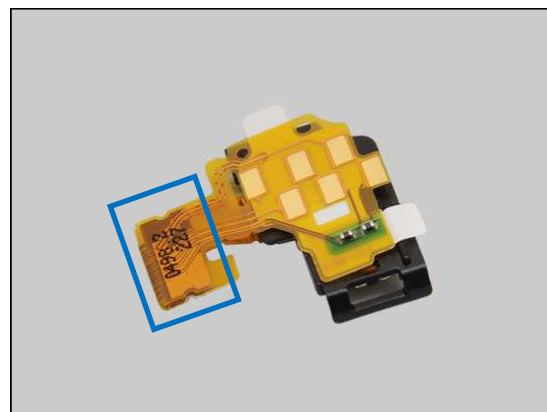
Peel off the protective film.



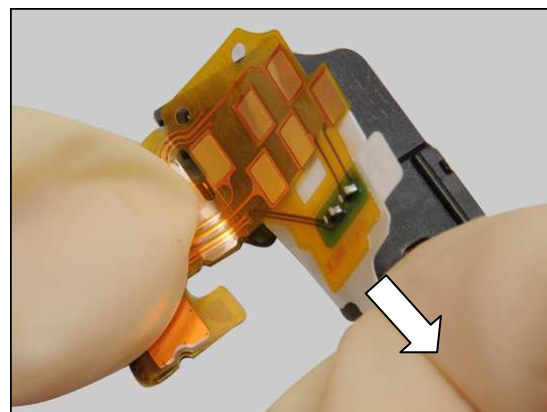
Bend the FPC of the Jack Flex PBA Assy by aligning the guiding holes and pegs as shown in the picture.



Press the FPC to secure its attachment as indicated by the blue rectangle.

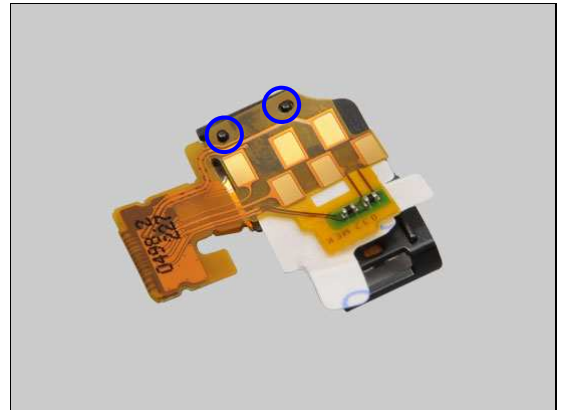


Wear Finger Cots and gently peel off half of this protective film as shown.

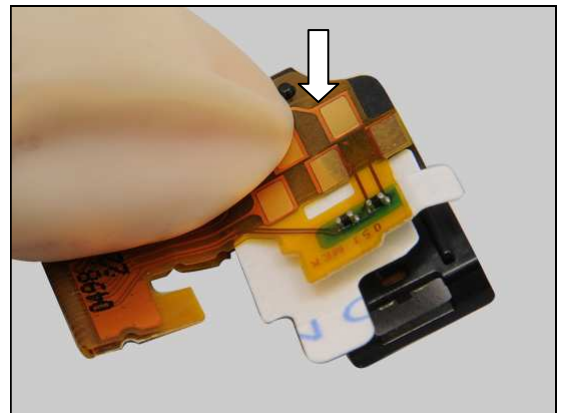


## Replacement: Jack Flex PBA Assy

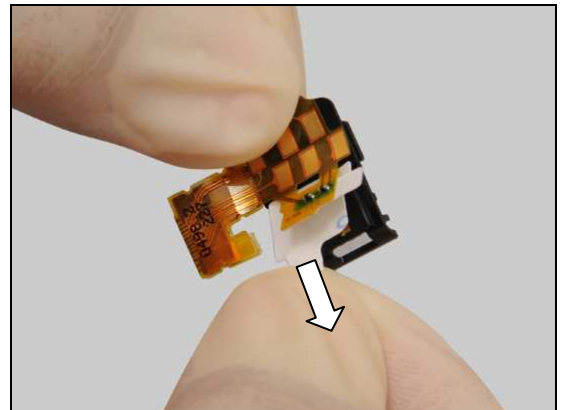
Make sure the position of the FPC as indicated by the guiding holes and pegs.



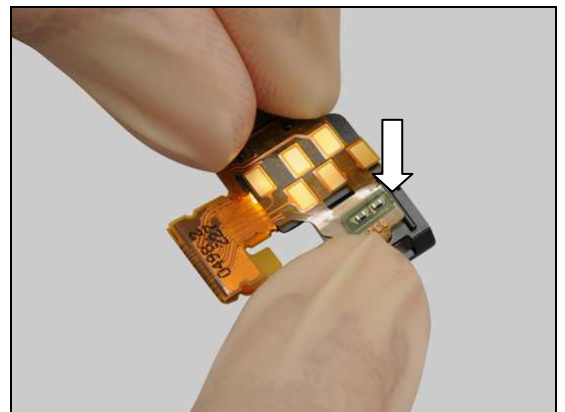
Wear Finger Cots and press to secure its attachment as shown in the picture.



Peel off the other half of this protective film.

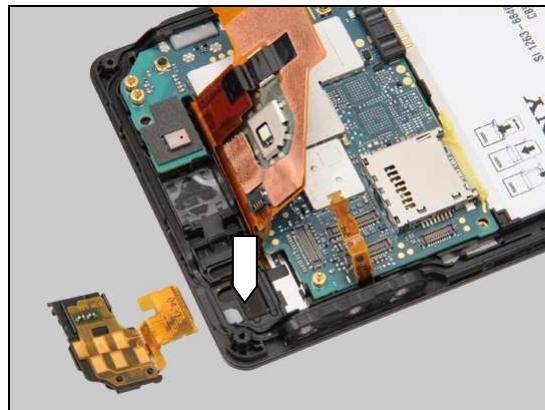


Press to secure its attachment.



## Replacement: Jack Flex PBA Assy

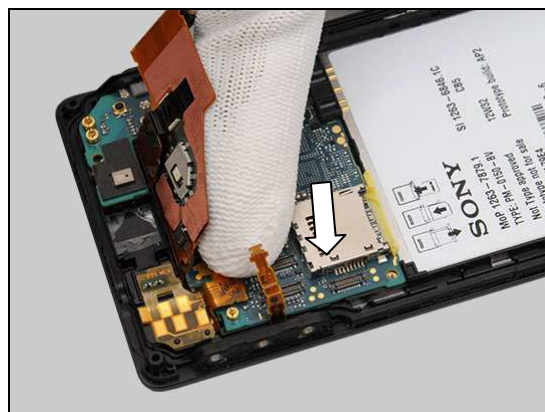
Place the new Jack Flex PBA Assy into its cavity.



Press to secure its position.



Press to snap the BtB connector.



## Replacement

### 4.1.16 Loudspeaker & Adhesive Speaker\_WR

*LT25i follow the 3.2.1 – 3.2.4, 3.4.1 Disassembly instructions!*

*LT25c follow the 3.3.1 – 3.3.5, 3.4.1 Disassembly instructions!*

Carry out the Removal as described below.

Prepare a new Loudspeaker & Adhesive Speaker\_WR.

Carry out the Installation as described below.

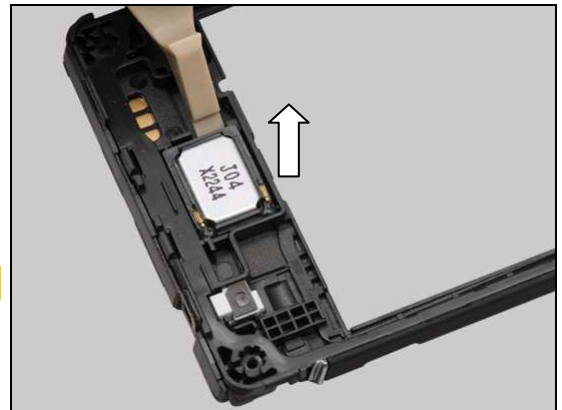
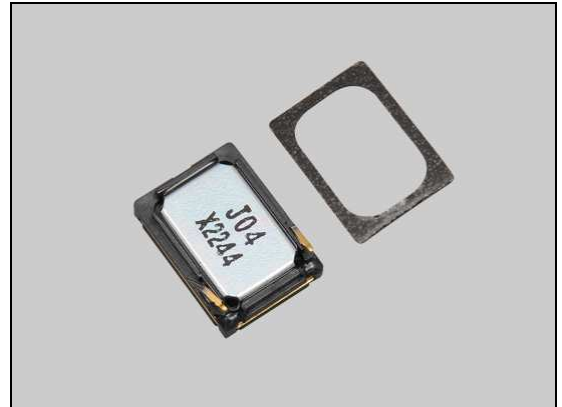
*LT25i follow the 5.2.7, 5.3.1 – 5.3.4 Reassembly instructions!*

*LT25c follow the 5.2.7, 5.4.1 – 5.4.5 Reassembly instructions!*

#### REMOVAL

Detach to remove the Loudspeaker by using the Front Opening Tool.

**Scrap! Not to be reused!**

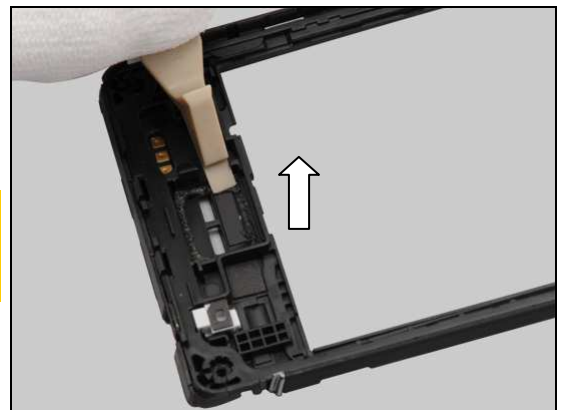


Detach to remove the Adhesive Speaker\_WR by using the Front Opening Tool.

**Scrap! Not to be reused!**

**Make sure all remains have been removed!**

**Do not scratch the plastic surface!**



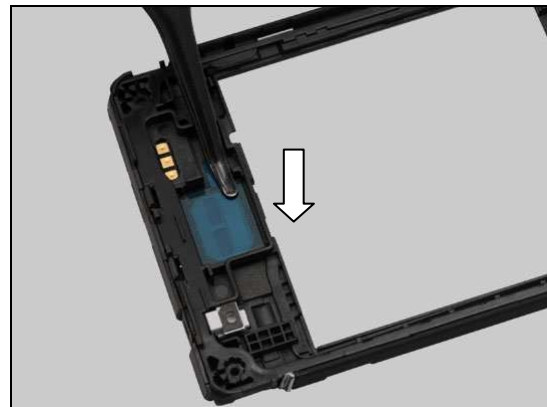
#### INSTALLATION

Place a new Adhesive Speaker\_WR into its socket.

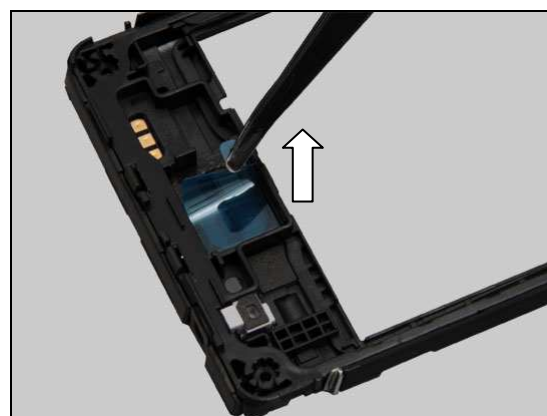


## Replacement: Loudspeaker & Adhesive Speaker\_WR

Press along to secure its attachment.



Gently peel off the protective film.



Place a new Loudspeaker into the cavity.

**Note the orientation of the Loudspeaker to be installed!**



Prepare the Press Tool Loudspeaker.

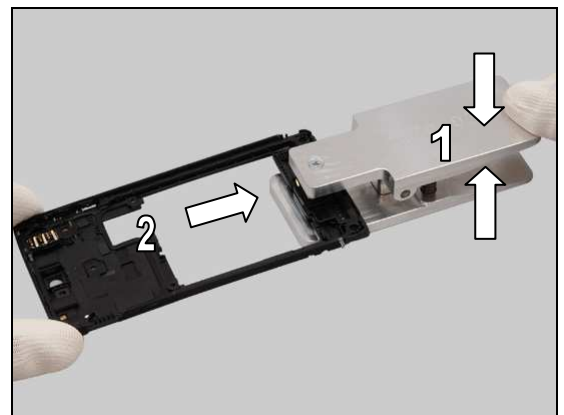


## Replacement: Loudspeaker & Adhesive Speaker\_WR

Make sure the press rubber of the tool press the centre of the Loudspeaker.

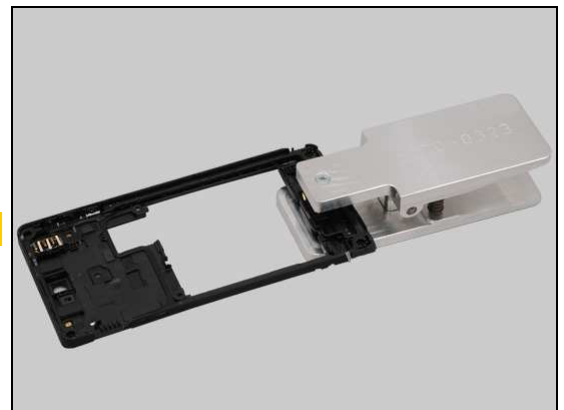


Hold the clip and position the press rubber on the center area of the Loudspeaker.

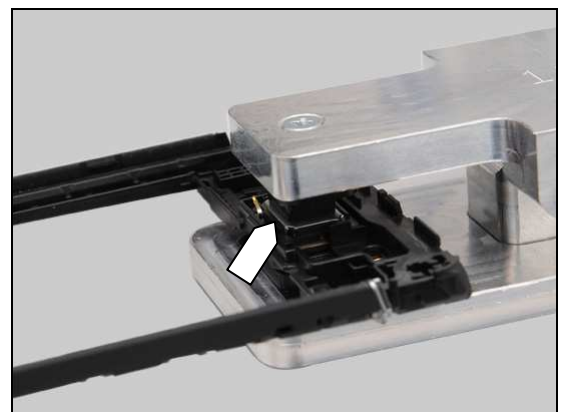


Loosen the clip to press the Loudspeaker for 10 seconds.

***Do not press the clip!***



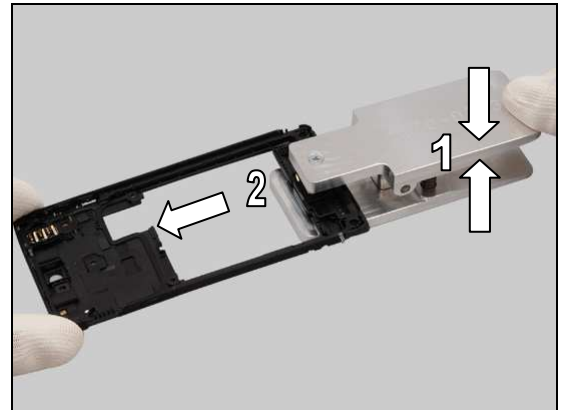
The press rubber of the tool presses the Loudspeaker when pressing as shown.





## Replacement: Loudspeaker & Adhesive Speaker\_WR

Press the clip and remove the Cover Rear Assy.



## Replacement

### 4.1.17 Sheet Shield NonCell

*LT25i follow the 3.2.1 – 3.2.4, 3.4.1 – 3.4.7 Disassembly instructions!*

*LT25c follow the 3.3.1 – 3.3.5, 3.4.1 – 3.4.7 Disassembly instructions!*

Carry out the Removal as described below.

Prepare a new Sheet Shield NonCell.

Carry out the Installation as described below.

*LT25i follow the 5.2.1 – 5.2.7, 5.3.1 – 5.3.4 Reassembly instructions!*

*LT25c follow the 5.2.1 – 5.2.7, 5.4.1 – 5.4.5 Reassembly instructions!*

#### REMOVAL

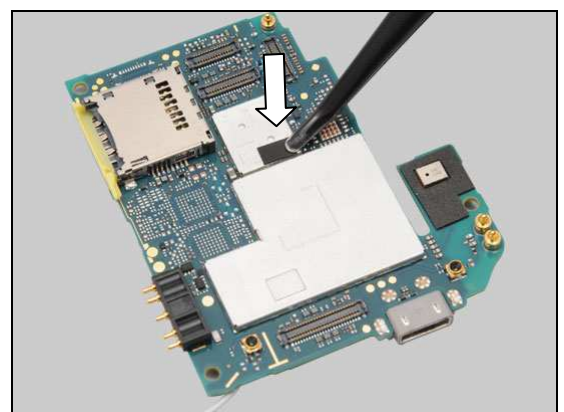
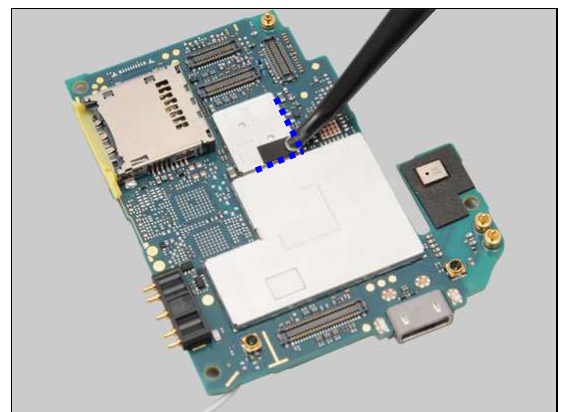
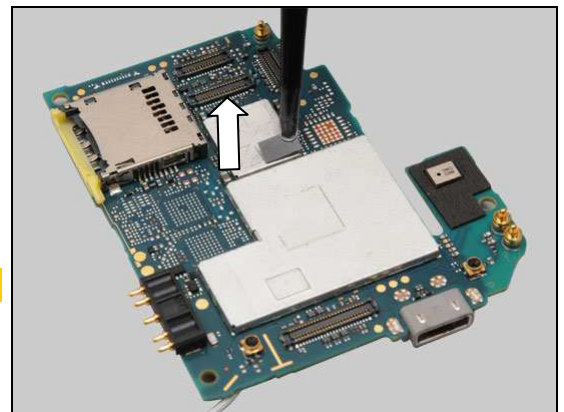
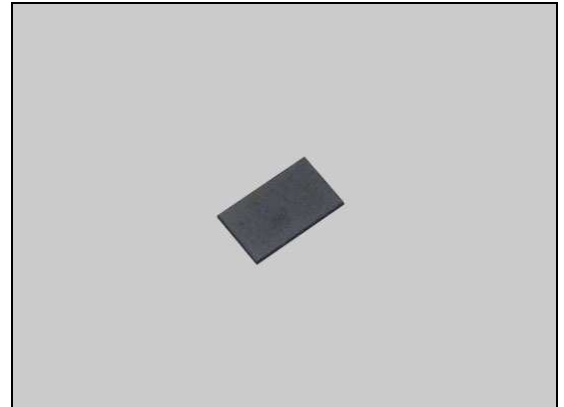
Peel off the Sheet Shield Noncell by using the Flex Film Assembly Tool.

**Scrap! Not to be reused!**

#### INSTALLATION

Attach a new Sheet Shield NonCell aligning by the blue lines.

Press to secure its attachment.



## Replacement

### 4.1.18 Side Key

*LT25i follow the 3.2.1 – 3.2.4, 3.4.1 Disassembly instructions!*

*LT25c follow the 3.3.1 – 3.3.5, 3.4.1 Disassembly instructions!*

Carry out the Removal as described below.

Prepare a new Side Key.

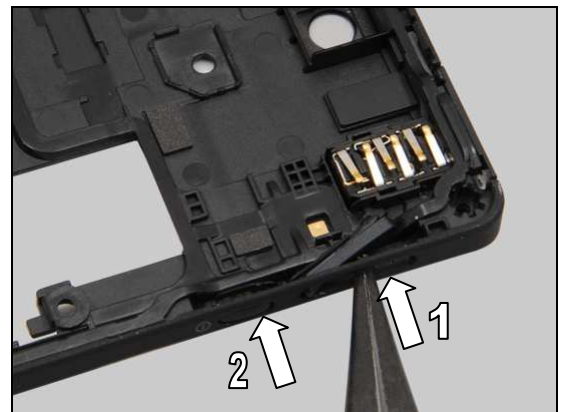
Carry out the Installation as described below.

*LT25i follow the 5.2.7, 5.3.1 – 5.3.4 Reassembly instructions!*

*LT25c follow the 5.2.7, 5.4.1 – 5.4.5 Reassembly instructions!*

### REMOVAL

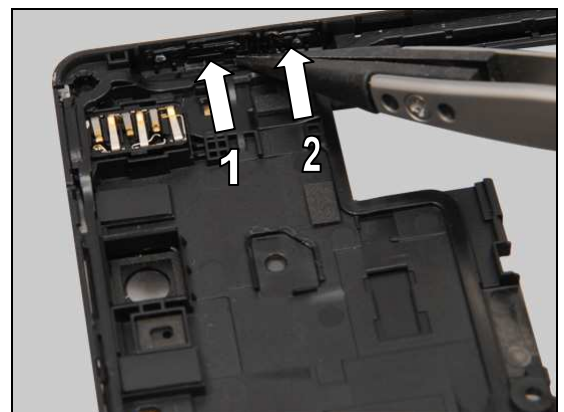
Gently push against the outside of the Side Key to remove it by using the Plastic Tweezers.



### INSTALLATION

Place a new Side Key into its slot.

Press to secure its position.



## Replacement

### 4.1.19 Side Key Flex PBA Frame Assy\_WR

*LT25i follow the 3.2.1 – 3.2.4, 3.4.1 – 3.4.7 Disassembly instructions!*

*LT25c follow the 3.3.1 – 3.3.5, 3.4.1 – 3.4.7 Disassembly instructions!*

Carry out the Removal as described below.

Prepare a new Side Key Flex PBA Frame Assy\_WR.

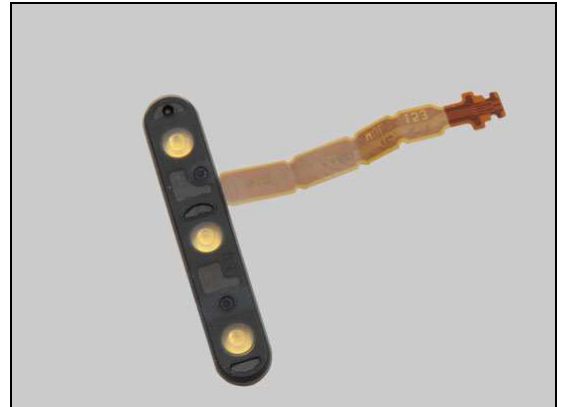
Carry out the Installation as described below.

*LT25i follow the 5.2.1 – 5.2.7, 5.3.1 – 5.3.4 Reassembly instructions!*

*LT25c follow the 5.2.1 – 5.2.7, 5.4.1 – 5.4.5 Reassembly instructions!*

#### REMOVAL

Gently push outwards the Side Key Flex PBA Frame Assy\_WR through the hole as shown in the picture by using a pair of Tweezers and remove it.



#### INSTALLATION

Insert the FPC of the Side Key Flex PBA Frame Assy\_WR into its slot as shown in the picture.

**Note the orientation of the Side Key Flex PBA Frame Assy\_WR to be installed!**

**Use an air gun to clean the Side Key Flex PBA Frame Assy\_WR and its cavity on the Touch/Display Front Cover Assy!**

**Make sure the Side Key Flex PBA Frame Assy\_WR is clean and no dirt, particles and fiber attached on it and is not damaged! Otherwise replace a new one.**

**Make sure its cavity is not damaged! Otherwise replace a new Touch/Display Front Cover Assy!**



Place the Side Key Flex PBA Frame Assy\_WR from the bottom side as shown in the picture.



## Replacement: Side Key Flex PBA Frame Assy\_WR

Press along to secure its position.



**Check that if the Side Key Flex PBA Frame Assy\_WR is properly installed as shown in the picture!**





## Replacement

### 4.1.20 Sub PBA Assy & Adhesive Sub PBA Assy

*LT25i follow the 3.2.1 – 3.2.4, 3.4.1 Disassembly instructions!*

*LT25c follow the 3.3.1 – 3.3.5, 3.4.1 Disassembly instructions!*

Carry out the Removal as described below.

Prepare a new Sub PBA Assy and a new Adhesive Sub PBA Assy.

Carry out the Installation as described below.

*LT25i follow the 5.2.7, 5.3.1 – 5.3.4 Disassembly instructions!*

*LT25c follow the 5.2.7, 5.4.1 – 5.4.5 Disassembly instructions!*

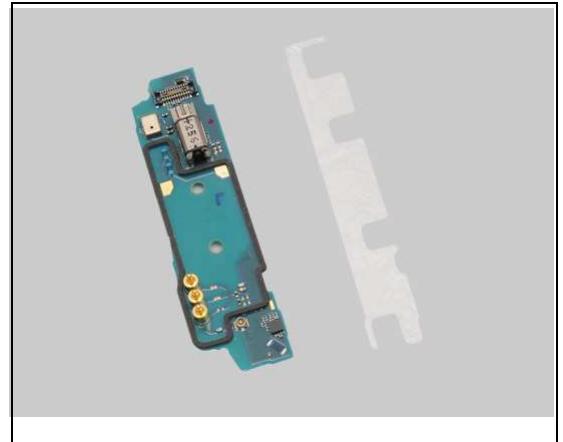
#### REMOVAL

Disconnect the BtB connector of the Relay Flex PBA Assy by using the Plastic Tweezers.

Disconnect the Cable RF connector by using the Flex Film Assembly Tool.

Gently insert the Guitar Pick and slide along to release the Sub PBA Assy and remove it.

**Be careful! Do not deform the Sub PBA Assy!**





## Replacement: Sub PBA Assy & Adhesive Sub PBA Assy

**Reuse the Adhesive Sub PBA Assy in case its stickiness is not lost. Otherwise scrap it!**

Detach to remove the Adhesive Sub PBA Assy by using the Front Opening Tool.

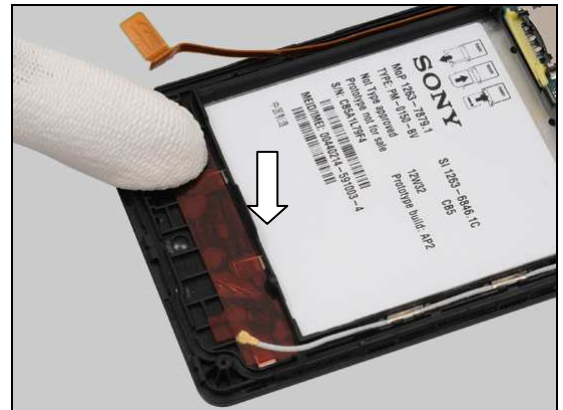
**Make sure all remains have been removed!**

### INSTALLATION

Place a new Adhesive Sub PBA Assy on the correct position as shown in the picture.

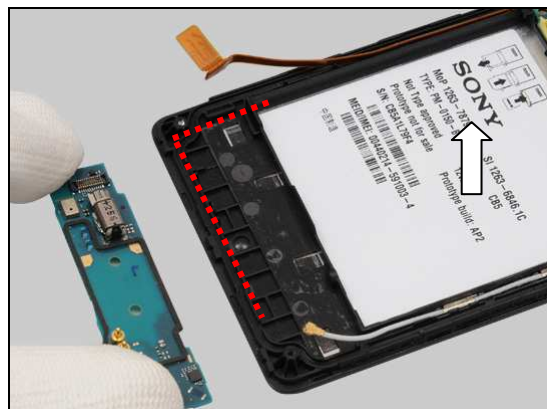
Press along to secure its attachment.

Peel off the protective film.



## Replacement: Sub PBA Assy & Adhesive Sub PBA Assy

Place a new Sub PBA Assy aligning by the guide lines as shown in the picture.



Press to secure its attachment by using the Flex Film Assembly Tool.

**Press on the Sub PBA Assy where there are no components and no contact pads to secure its attachment.**

**Do not damage the components on the Sub PBA Assy!**

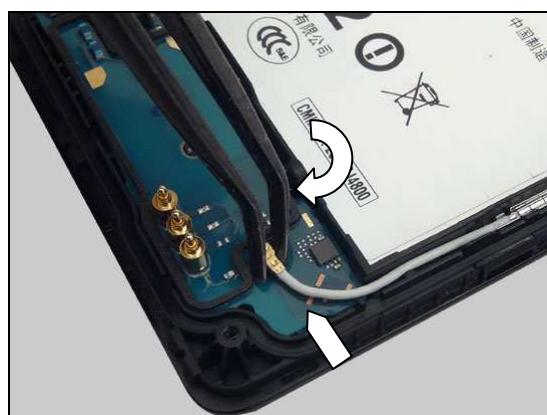


Press to connect this end of the Cable RF connector by using the Flex Film Assembly Tool.



Rotate the Cable RF as shown in the picture.

**Make sure the Cable RF assembled in the range of this line!**



## Replacement: Sub PBA Assy & Adhesive Sub PBA Assy

Bend the FPC of the Relay Flex PBA Assy 90 degrees as shown in the picture.



Insert the FPC into its cavity as shown in the picture.



Gently press to secure its position of the FPC of the Relay Flex PBA Assy as shown in the picture.



Press to snap the BtB connector.



## Replacement

### 4.1.21 Board Swap - Replacement

*LT25i follow the 3.2.1 – 3.2.4, 3.4.1 – 3.4.7 Disassembly instructions!*

*LT25c follow the 3.3.1 – 3.3.5, 3.4.1 – 3.4.7 Disassembly instructions!*

*Follow the 4.1.8 Removal instructions!*

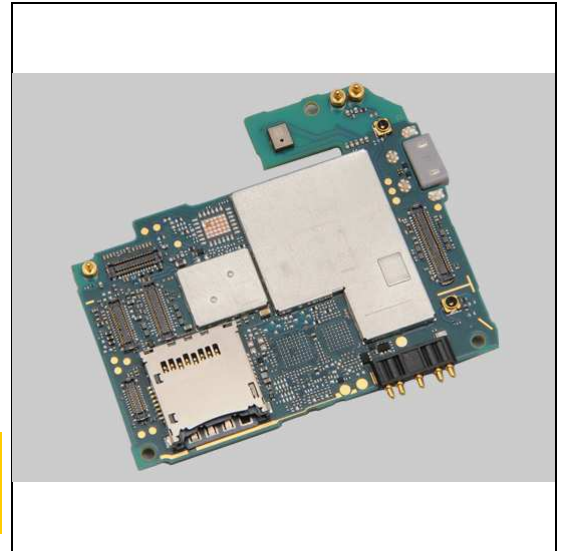
Replace the Swap Board.

*Follow the 4.1.8, 4.1.12 4.1.17 Installation instructions!*

*LT25i follow the 5.2.1 – 5.2.7, 5.3.1 – 5.3.4 Reassembly instructions!*

*LT25c follow the 5.2.1 – 5.2.7, 5.4.1 – 5.4.5 Reassembly instructions!*

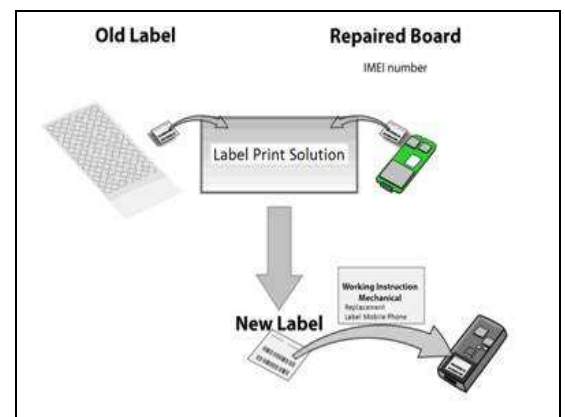
**Touch Vendor ID Writing and LCD reset SW must be performed for all replaced units; 1257-2706 Trouble Shooting Application – mechanical.**



### 4.1.22 Board Swap – Change Label

#### CHANGE LABEL

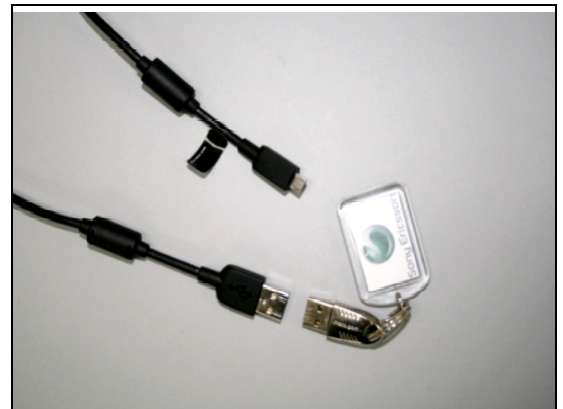
Follow the instructions in the Generic Repair Manual – Build swap for change of label.



### 4.1.23 Board Swap – Customize of Software

#### CUSTOMIZE OF SOFTWARE

*Follow the instructions in the Generic Repair Manual – Build swap for customization of the software.*





## Replacement

### 4.2 Replacement-LT25i Specific

#### 4.2.1 Cap Micro USB

*Follow the 3.2.1 – 3.2.4, 3.4.1 Disassembly instructions!*

Prepare a new Cap Micro USB.

*Follow the 5.2.7, 5.3.1 – 5.3.4 Reassembly instructions!*



#### 4.2.2 Cover Battery Assy

*Follow the 3.2.1 Disassembly instructions!*

Prepare a Cover Battery Assy.

*Follow the 5.3.4 Reassembly instructions!*



#### 4.2.3 Cover Rear Assy

*Follow the 3.2.1 – 3.2.4, 3.4.1 Disassembly instructions!*

*Follow the 4.1.7, 4.1.18 Removal instructions!*

Prepare a new Cover Rear Assy.

*Follow the 4.1.7, 4.1.18 Installation instructions!*

*Follow the 5.2.7, 5.3.1 – 5.3.4 Reassembly instructions!*



## Replacement

### 4.2.4 Ant Diversity Flex & Adhesive ANT NonCell\_WR

*Follow the 3.2.1 – 3.2.2 Disassembly instructions!*

Carry out the Removal as described below.

Prepare a new Ant Diversity Flex & Adhesive NonCell\_WR.

Carry out the Installation as described below.

*Follow the 5.3.3 – 5.3.4 Reassembly instructions!*

#### REMOVAL

Remove this Screw Len:5.0 Diam:1.4 M by using a screwdriver with Bits (T5).

**Scrap! Not to be reused!**



Detach to remove the Ant Diversity Flex by using the Front Opening Tool.

**Scrap! Not to be reused!**



Detach to remove the Adhesive ANT NonCell\_WR by using the Front Opening Tool.

**Scrap! Not to be reused!**

**Make sure all remains have been removed!**

**Do not scratch the plastic surface!**

**Do not touch the pogo pins!**





## Replacement: Ant Diversity Flex & Adhesive ANT NonCell\_WR

### INSTALLATION

Place a new Adhesive ANT NonCell\_WR on the correct position.



Press along to secure its attachment.



Peel off the protective film.

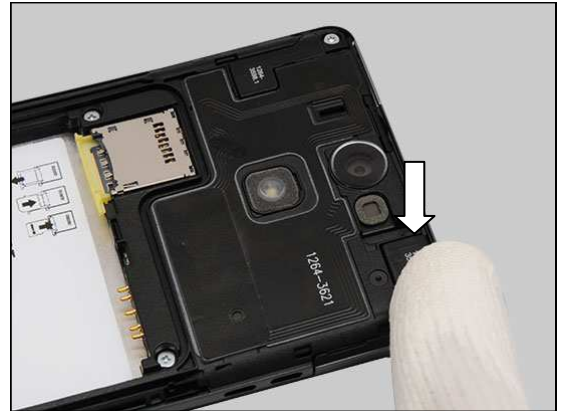


Insert a new Ant Diversity Flex into its socket as shown in the picture.



## Replacement: Ant Diversity Flex & Adhesive ANT NonCell\_WR

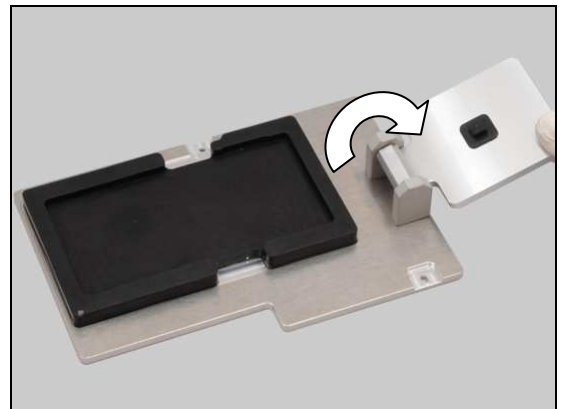
Press to secure its attachment as shown in the picture.



Prepare the Sub Antenna Press Insert.



Open the tool.

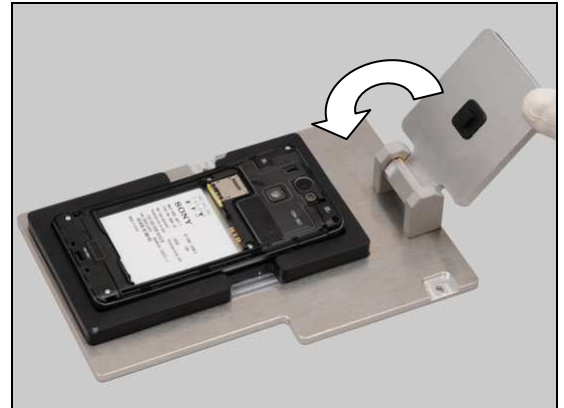


Place the unit into its cavity.



## Replacement: Ant Diversity Flex & Adhesive ANT NonCell\_WR

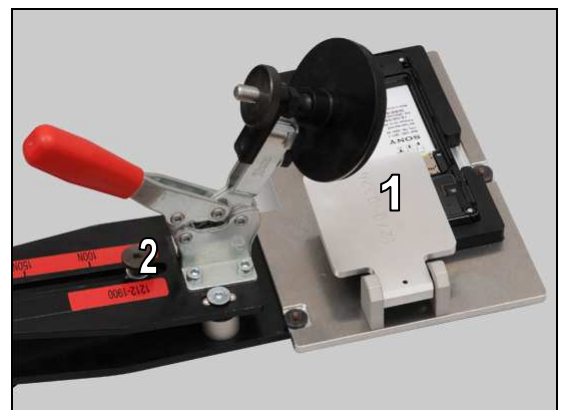
Close the Tool.



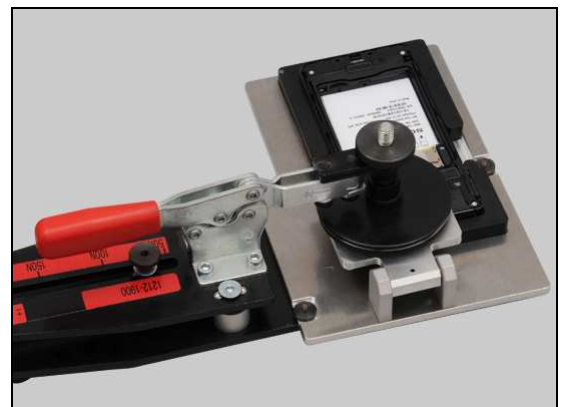
Prepare the Pressure Tool as shown.



Fasten the Sub Antenna Press Insert assembly (1) to the Pressure Tool (2).



Press it with a pressure value of 60N for 5 seconds.



## Replacement: Ant Diversity Flex & Adhesive ANT NonCell\_WR

Apply  $12\text{Ncm} \pm 2\text{Ncm}$  torque when tightening this screw with Bits (T5).



## Replacement

### 4.2.5 Cap Audio Jack

*Follow the 3.2.1 – 3.2.2 Disassembly instructions!*

*Follow the 4.2.4 Removal instructions!*

Carry out the Removal as described below.

Prepare a new Cap Audio Jack.

Carry out the Installation as described below.

*Follow the 4.2.4 Installation instructions!*

*Follow the 5.3.3 – 5.3.4 Reassembly instructions!*

#### REMOVAL

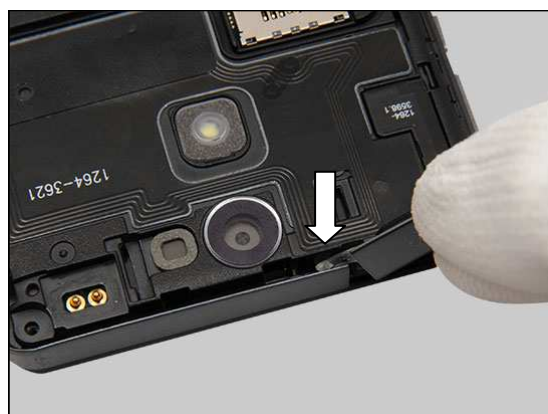
Gently remove the Cap Audio Jack by lifting straight up.



#### INSTALLATION

Gently insert the plug of the Cap Audio Jack into the socket completely as shown in the picture.

**Use an air gun to clean the Cap Audio Jack and its hole!  
Do not touch the sealing rubber of the Cap Audio Jack!  
Make sure that the Cap Audio Jack is clean and no dirt,  
particles and fiber attached on it and is not damaged!  
Otherwise replace a new one.**



Press along to secure its position.



## Replacement: Cap Audio Jack

**Check that if the Cap Audio Jack is properly installed as shown in the picture!**





## Replacement

### 4.2.6 Net Speaker

*Follow the 3.2.1 – 3.2.2 Disassembly instructions!*

Carry out the Removal as described below.

Prepare a new Net Speaker.

Carry out the Installation as described below.

*Follow the 5.3.3 – 5.3.4 Reassembly instructions!*

#### REMOVAL

Detach to remove the Net Speaker by using the Flex Film Assembly Tool.

**Scrap! Not to be reused!**

**Make sure that all remains have been removed!**

#### INSTALLATION

Place a new Net Speaker on the correct position.

Press along to secure its position.



## Replacement

### 4.2.7 Water Indicator

*Follow the 3.2.1 – 3.2.4, 3.4.1 Disassembly instructions!*

Carry out the Removal as described below.

Prepare a new Water Indicator.

Carry out the Installation as described below.

*Follow the 5.2.7, 5.3.1 – 5.3.4 Disassembly instructions!*

#### REMOVAL

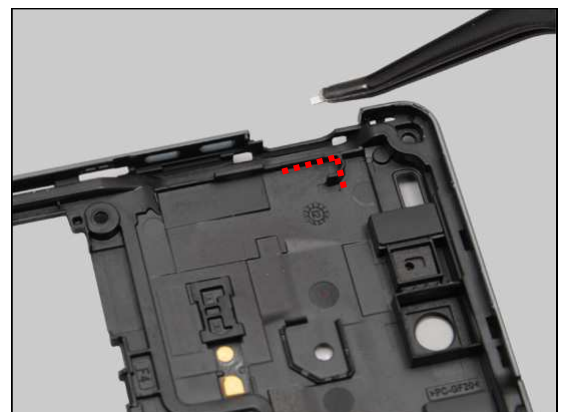
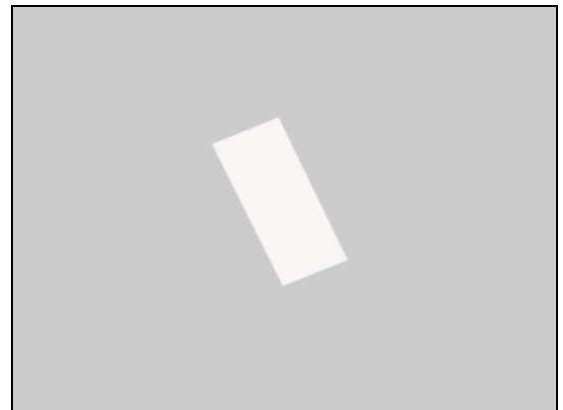
Detach to remove the Water Indicator by using the Flex Film Assembly Tool.

**Scrap! Not to be reused!**

#### INSTALLATION

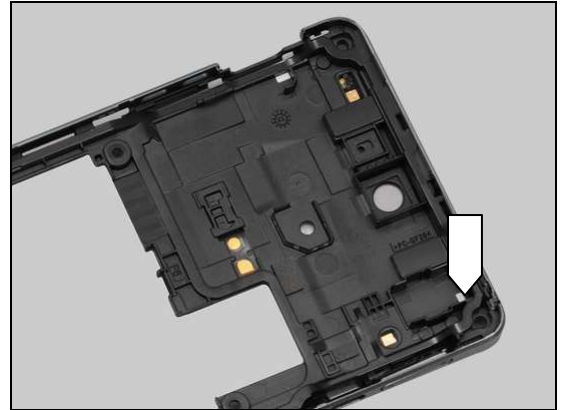
Attach a new Water Indicator on the correct position.

Press to secure its attachment.



## Replacement: Water Indicator

*Follow the 4.1.7 Removal instructions!*  
Do the same to this Water Indicator.  
*Follow the 4.1.7 Installation instructions!*



Do the same to this Water Indicator on the Cover Rear Assy.



## Replacement

### 4.3 Replacement-LT25c Specific

#### 4.3.1 Cap Micro USB

*Follow the 3.3.1 – 3.3.5, 3.4.1 Disassembly instructions!*

Prepare a new Cap Micro USB.

*Follow the 5.2.7, 5.4.1 – 5.4.5 Reassembly instructions!*



#### 4.3.2 Cover Battery Assy

*Follow the 3.3.1 Disassembly instructions!*

Prepare a new Cover Battery Assy.

*Follow the 5.4.5 Reassembly instructions!*



#### 4.3.3 Cover Bottom

*Follow the 3.3.1 – 3.3.3 Disassembly instructions!*

Prepare a new Cover Bottom.

*Follow the 5.4.3 – 5.4.5 Reassembly instructions!*

**Scrap! Not to be reused!**



#### 4.3.4 Cover Rear Assy

*Follow the 3.3.1 – 3.3.5, 3.4.1 Disassembly instructions!*

*Follow the 4.1.7, 4.1.18 Removal instructions!*

Prepare a new Cover Rear Assy.

*Follow the 4.1.7, 4.1.18 Installation instructions!*

*Follow the 5.2.7, 5.4.1 – 5.4.5 Reassembly instructions!*



## Replacement

### 4.3.5 Cap Audio Jack

*Follow the 3.3.1 – 3.3.5, 3.4.1 Disassembly instructions!*

Carry out the Removal as described below.

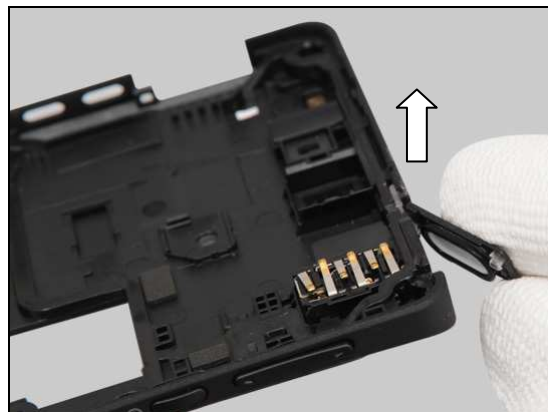
Prepare a new Cap Audio Jack.

Carry out the Installation as described below.

*Follow the 5.2.7, 5.4.1 – 5.4.5 Reassembly instructions!*

#### REMOVAL

Gently remove the Cap Audio Jack by lifting straight up.



#### INSTALLATION

Gently insert the plug of the Cap Audio Jack into the socket as shown in the picture.

**Use an air gun to clean the Cap Audio Jack and its hole!  
Do not touch the sealing rubber of the Cap Audio Jack!  
Make sure that the Cap Audio Jack is clean and no dirt,  
particles and fiber attached on it and is not damaged!  
Otherwise replace a new one.**



Turn it over.



## Replacement: Cap Audio Jack

Press along to secure its position.





## Replacement

### 4.3.6 Cushion Sheet 1<sup>st</sup> Mic\_WR

*Follow the 3.3.1 – 3.3.3 Disassembly instructions!*

Carry out the Removal as described below.

Prepare a new Cushion Sheet 1<sup>st</sup> Mic\_WR.

Carry out the Installation as described below.

*Follow the 5.4.3 – 5.4.5 Reassembly instructions!*

#### REMOVAL

Gently peel off the Cushion Sheet 1<sup>st</sup> Mic\_WR to remove it by using a pair of Plastic Tweezers.

**Scrap! Not to be reused!**

**Make sure all remains have been removed!**

**Do not scratch the plastic surface!**



#### INSTALLATION

Place a new Cushion Sheet 1<sup>st</sup> Mic\_WR on the correct position.

Press along to secure its attachment.



## Replacement: Cushion Sheet 1<sup>st</sup> Mic\_WR

Peel off the protective film.



## Replacement

### 4.3.7 Cover Bottom Deco Silver

*Follow the 3.3.1 – 3.3.3 Disassembly instructions!*  
 Carry out the Removal as described below.  
 Prepare a new Cover Bottom Deco Silver.  
 Carry out the Installation as described below.  
*Follow the 5.4.3 – 5.4.5 Reassembly instructions!*

#### REMOVAL

Detach to remove the Cover Bottom Deco Silver with fingers.

**Scrap! Not to be reused!**

#### INSTALLATION

Place a new Cover Bottom Deco Silver on the correct position.

Press to secure its attachment.



## Replacement

### 4.3.8 Net Speaker

*Follow the 3.3.1 – 3.3.3 Disassembly instructions!*

*Follow the 4.3.7 Removal instructions!*

Carry out the Removal as described below.

Prepare a new Net Speaker.

Carry out the Installation as described below.

*Follow the 4.3.7 Installation instructions!*

*Follow the 5.4.3 – 5.4.5 Reassembly instructions!*

#### REMOVAL

Detach to remove the Net Speaker by using a Flex Film Assembly Tool.

**Scrap! Not to be reused!**

**Make sure that all remains have been removed!**

#### INSTALLATION

Place a new Net Speaker on its proper position.

Press along to secure its position.



## Replacement

### 4.3.9 Water Indicator

*Follow the 3.3.1 – 3.3.5, 3.4.1 Disassembly instructions!*

Carry out the Removal as described below.

Prepare a new Water Indicator.

Carry out the Installation as described below.

*Follow the 5.2.7, 5.4.1 – 5.4.5 Reassembly instructions!*

#### REMOVAL

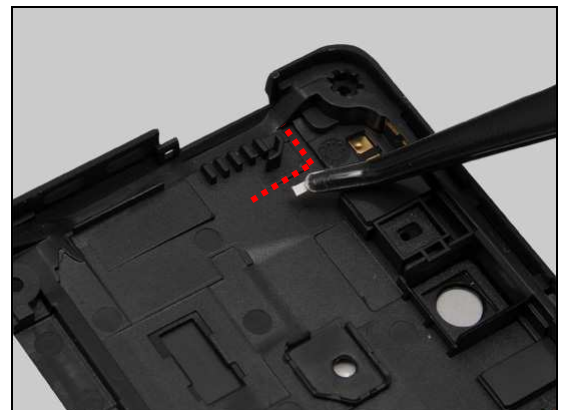
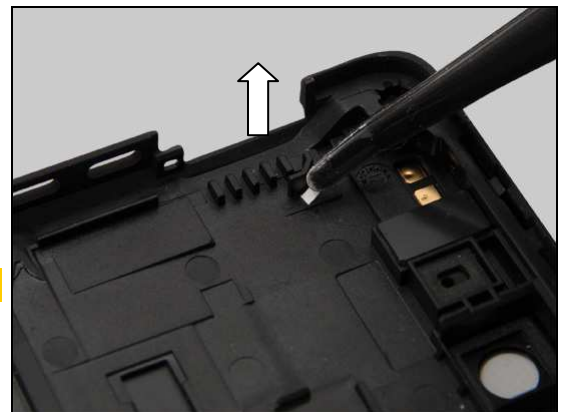
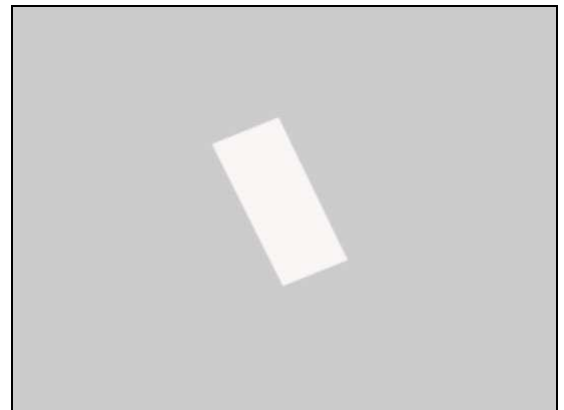
Detach to remove the Water Indicator by using the Flex Film Assembly Tool.

**Scrap! Not to be reused!**

#### INSTALLATION

Attach a new Water Indicator on the correct position.

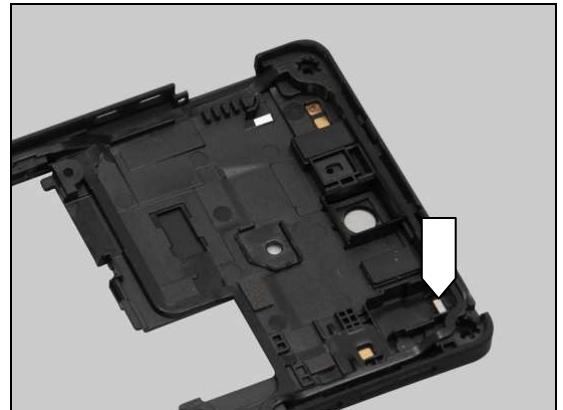
Press to secure its attachment.





## Replacement: Water Indicator

*Follow the 4.1.7 Removal instructions!*  
Do the same to this Water Indicator.  
*Follow the 4.1.7 Installation instructions!*



*Follow the 3.3.1 – 3.3.2 Disassembly instructions!*  
Do the same to this water indicator on the Touch/Display  
Front Cover Assy.  
*Follow the 5.4.4 – 5.4.5 Reassembly instructions!*

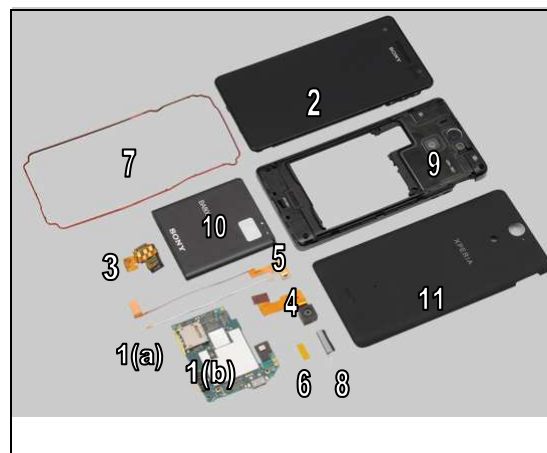


## 5 Reassembly

### 5.1 Overview

The LT25i reassembly is done in the following order:

1. Cable RF (a) & Main PBA (b)
2. Touch/Display Front Cover Assy
3. Jack Flex PBA Assy
4. Main Camera
5. Relay Flex PBA Assy
6. Sheet Side Key FPC
7. Main Gasket
8. Cap Micro USB
9. Cover Rear Assy
10. Battery
11. Cover Battery Assy

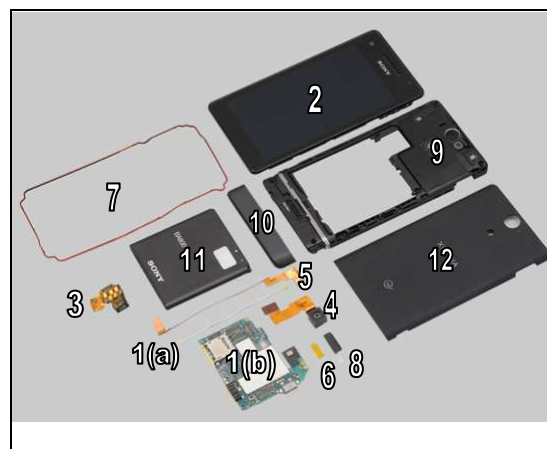


The order 1 – 7 refers to 5.2.1 – 5.2.7.

The order 8 – 11 refers to 5.3.1 – 5.3.4.

The LT25c reassembly is done in the following order:

1. Cable RF (a) & Main PBA (b)
2. Touch/Display Front Cover Assy
3. Jack Flex PBA Assy
4. Main Camera
5. Relay Flex PBA Assy
6. Sheet Side Key FPC
7. Main Gasket
8. Cap Micro USB
9. Cover Rear Assy
10. Cover Bottom
11. Battery
12. Cover Battery Assy



The order 1 – 7 refers to 5.2.1 – 5.2.7.

The order 8 – 12 refers to 5.4.1 – 5.4.5.

## Reassembly

### 5.2 Reassembly-LT25i/LT25c Common

#### 5.2.1 Cable RF & Main PBA

Prepare the Cable RF and the Main PBA.

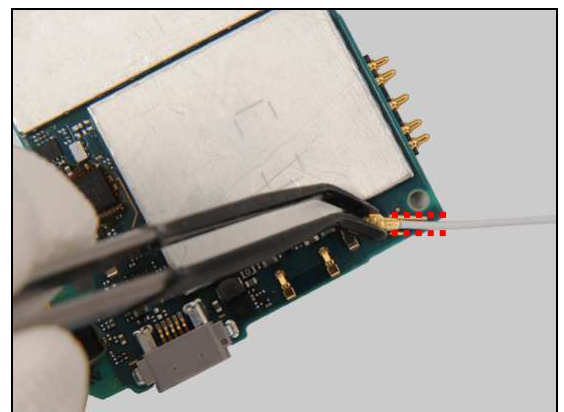
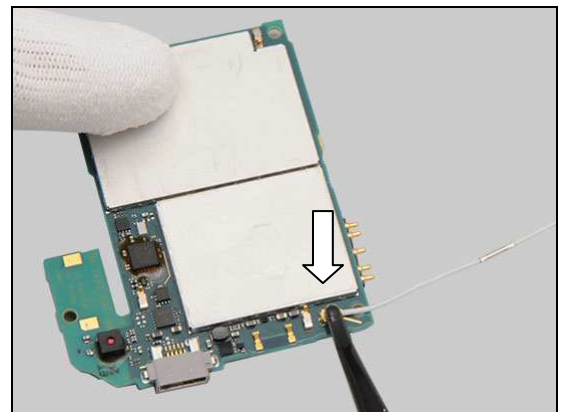
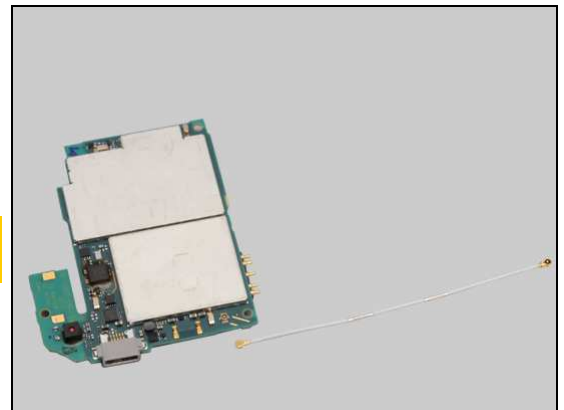
**Check if the Sheet Shield NonCell (1272-1888) is attached or not, add this sheet if not.**

Press to connect this end of the Cable RF connector by using the Flex Film Assembly Tool.

Rotate the Cable RF to the right direction aligning the guide line as shown in the picture.

#### 5.2.2 Touch/Display Front Cover Assy

Prepare the Touch/Display Front Cover Assy.



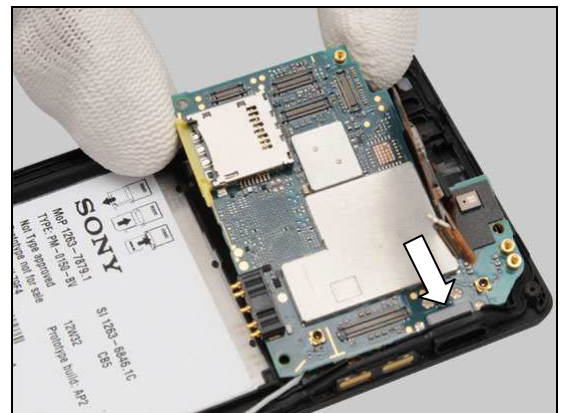
## Reassembly

Gently insert the FPC into the slot of the Main PBA as shown in the picture.

**Do not stretch the display FPC!**

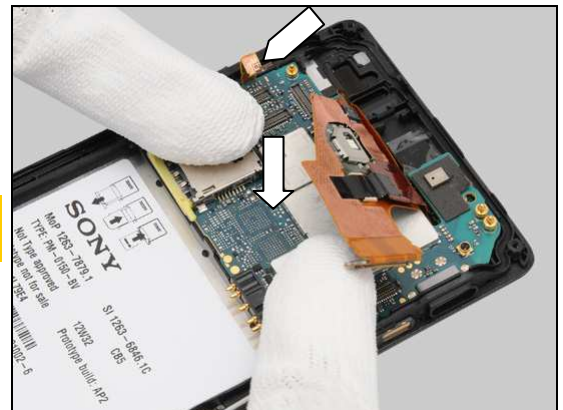


Gently insert the USB connector of the Main PBA into its hole.



Press to snap the hook of the Main PBA.

**Make sure the FPC of the Side Key Flex PBA Frame Assy\_ WR not under the Main PBA!**

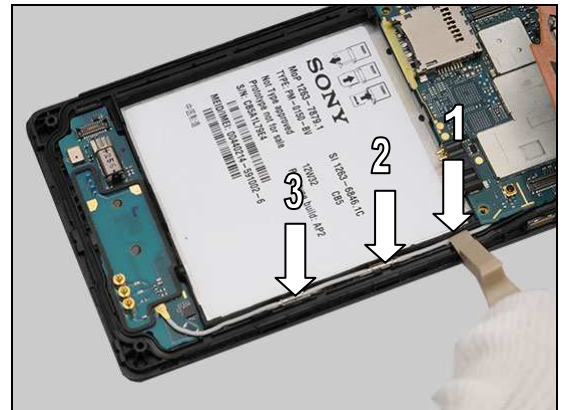


Press to connect this end of the Cable RF connector by using the Flex Film Assembly Tool.



## Reassembly

Press to secure the position of the Cable RF by using the Front Opening Tool.



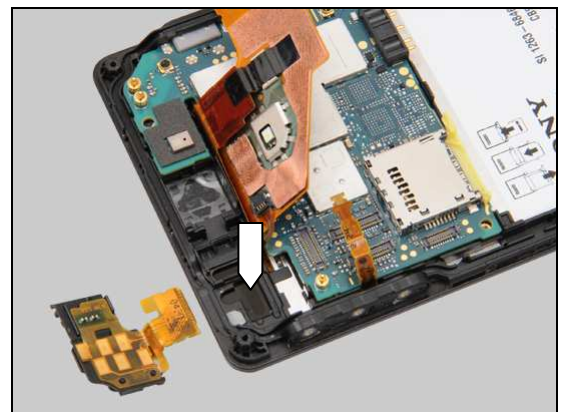
Rotate the Cable RF as shown in the picture.

**Make sure the Cable RF assembled in the range of this line!**



### 5.2.3 Jack Flex PBA Assy

Place the Jack Flex PBA Assy into its cavity.



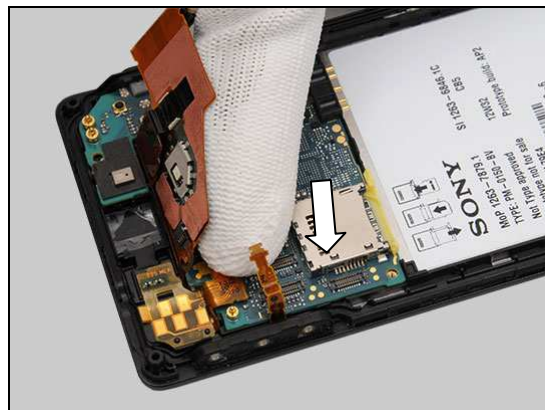
Press to secure its position.



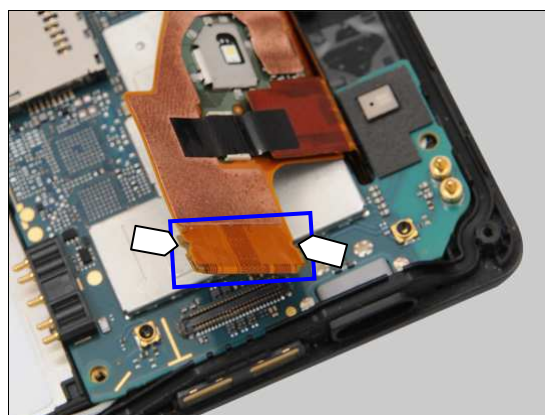


## Reassembly

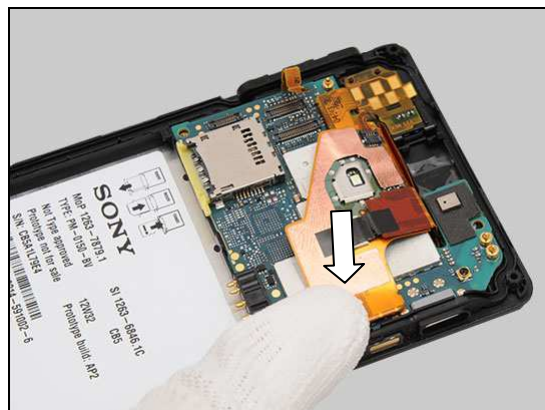
Press to snap the BtB connector.



**Make sure the display BtB connector FPC is attached as shown in the picture. If not, press to secure its attachment by alignment with the guiding feature as the pointers indicated!**



Press to snap the BtB connector of the display FPC.



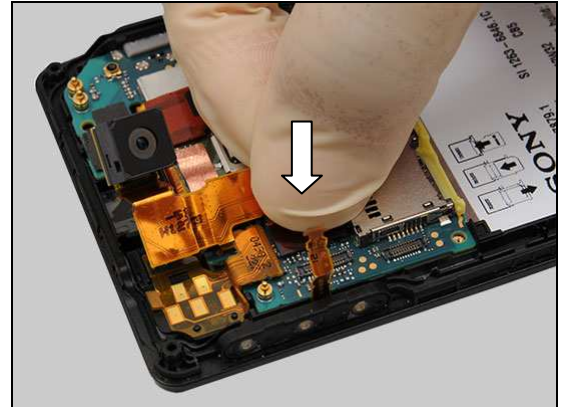
### 5.2.4 Main Camera

**Make sure the stickiness of the Foil Adhesive CAM is not lost! Otherwise follow 4.1.14 Removal and Installation instructions to replace a new one.**



## Reassembly

Wear Finger Cots and press to snap the BtB connector of the Main Camera as shown in the picture.



Securely place the head of the Main Camera into its cavity.

**Do not touch the camera lens!**



Press to secure its position.

**Do not touch the camera lens!**



### 5.2.5 Relay Flex PBA Assy

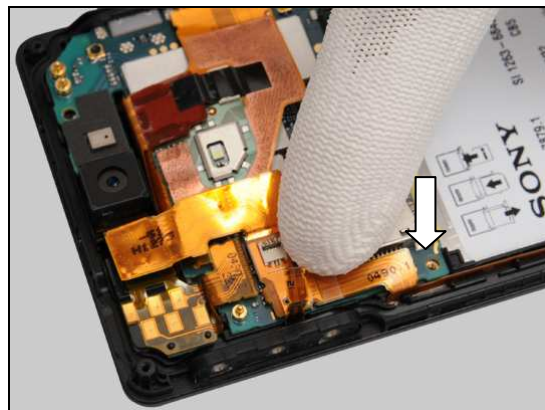
Prepare the Relay Flex PBA Assy.

**Make sure the FPC of the Side Key Flex PBA Frame Assy\_WR is vertical as shown in the picture!**



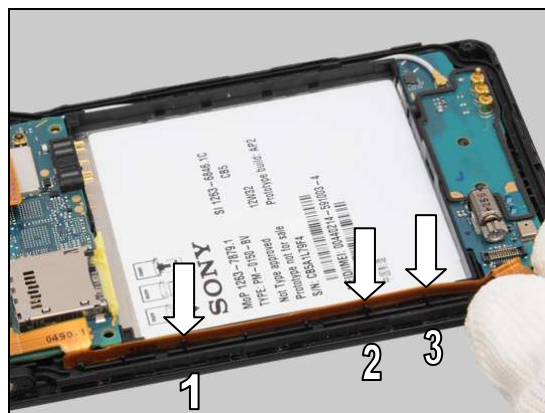
## Reassembly

Press to snap the BtB connector.

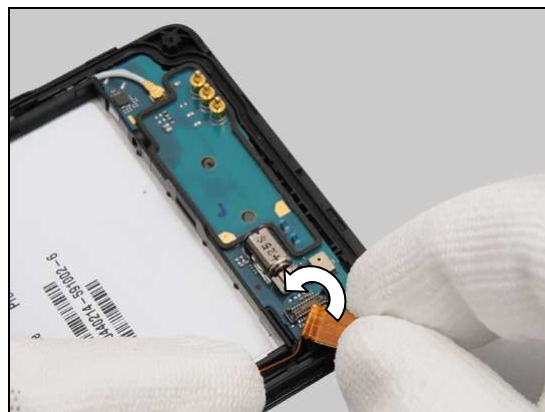


Securely place the Relay Flex PBA Assy into its cavity as shown in the picture.

**Make sure the FPC of the Relay Flex PBA Assy installed in its cavity as shown in the picture!**



Bend the FPC of the Relay Flex PBA Assy 90 degrees as shown in the picture.



Insert the FPC into its cavity as shown in the picture.





## Reassembly

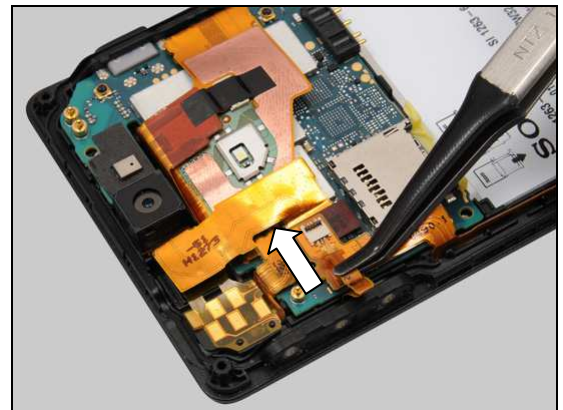
Gently press to secure its position of the FPC as shown in the picture.



Press to snap the BtB connector.



Gently insert the flex part of the Side Key Flex PBA Frame Assy\_WR into the ZIF connector by using the Flex Film Assembly Tool.



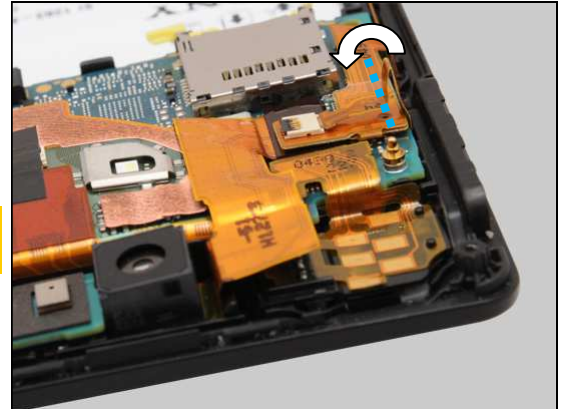
Lock the ZIF connector by using the Front Opening Tool.



## Reassembly

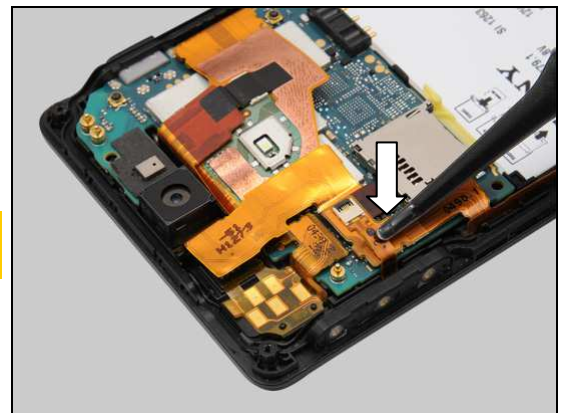
Bend the FPC of the Side Key Flex PBA Frame Assy\_WR as shown in the picture.

**Do not stretch the FPC of the Side Key Flex PBA Frame Assy\_WR!**



Fold the Side Key Flex PBA Frame Assy\_WR FPC as shown in the picture.

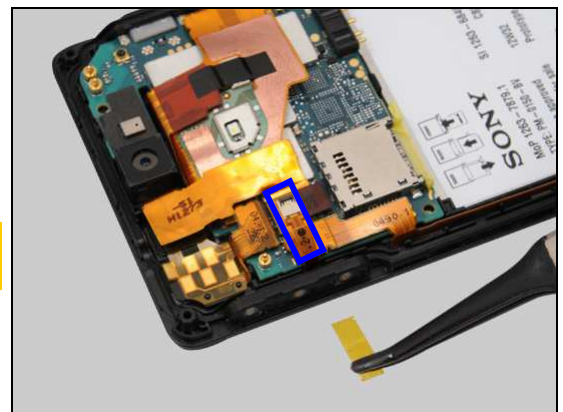
**Do not damage the Side Key Flex PBA Frame Assy\_WR FPC!**



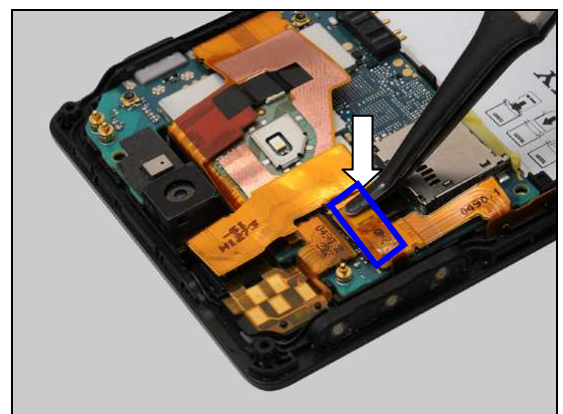
### 5.2.6 Sheet Side Key FPC

Attach a new Sheet Side Key FPC on the correct position.

**Make sure the Sheet Side Key FPC covers the blue rectangle!**



Gently press along to secure its attachment by using the Flex Film Assembly Tool.





## Reassembly

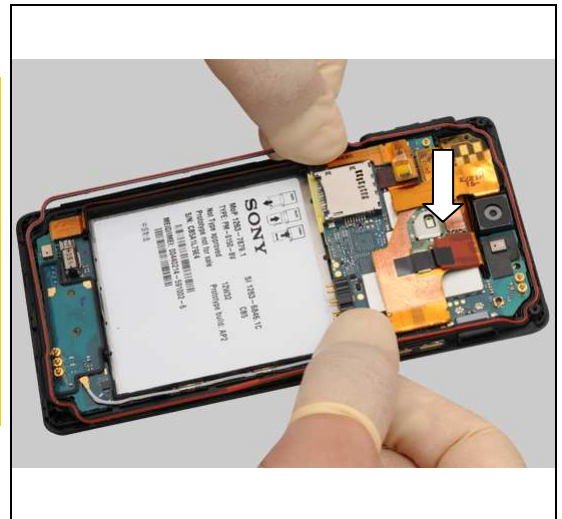
### 5.2.7 Main Gasket

**Use an air gun to clean the Main Gasket and its cavity on the Touch/Display Front Cover Assy!**

**Make sure that the Main Gasket is clean and no dirt, particles and fiber attached on it! And make sure that the Main Gasket is not twisted, not deformed or not damaged! Otherwise replace a new Main Gasket!**

**Make sure that the Main Gasket cavity on the Touch/Display Front Cover Assy is not damaged! Otherwise replace a new Touch/Display Front Cover Assy!**

Place the top side of the Main Gasket into its cavity as shown in the picture.



Place the bottom side to secure its position as shown in the picture.



Press the Main Gasket as shown in the picture.



Do the same as shown in the picture.



## Reassembly

Do the same as shown in the picture.



Do the same as shown in the picture.



Do the same as shown in the picture.



Do the same as shown in the picture.

**Make sure that the Main Gasket is properly mounted into its cavity, no twisted or no deformed! Otherwise reassemble it or replace a new Main Gasket!**



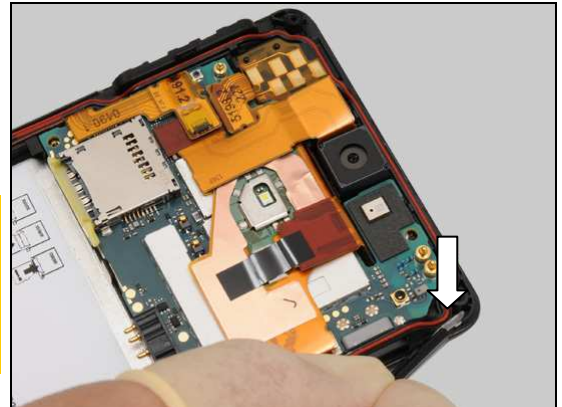
## Reassembly

### 5.3 Reassembly-LT25i Specific

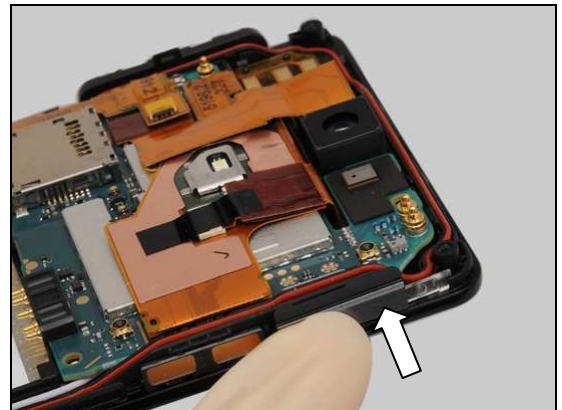
#### 5.3.1 Cap Micro USB

Wear new Finger Cots and gently insert the plug of the Cap Micro USB into the socket with fingers as shown in the picture.

**Use an air gun to clean the Cap Micro USB and its hole!**  
**Do not touch the sealing rubber of the Cap Micro USB!**  
**Make sure that the Cap Micro USB is clean and no dirt, particles and fiber attached on it and is not damaged!**  
**Otherwise replace a new one.**

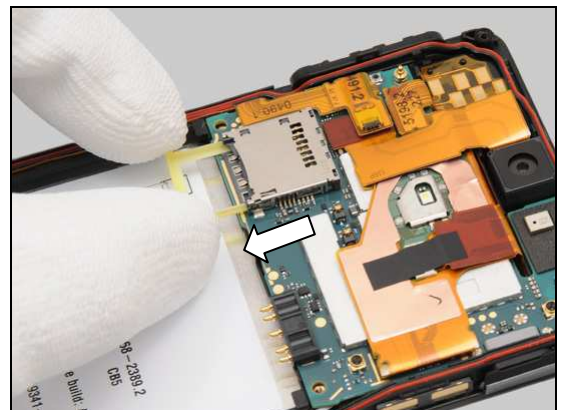


Press to secure its position.



#### 5.3.2 Cover Rear Assy

Gently pull the Card Connector Tray out from its cavity.



Gently place the Cover Rear Assy on the correct position from the left side.

**Use an air gun to clean the Cover Rear Assy!**  
**Make sure that the Cover Rear Assy is clean and no dirt, particles and fiber attached on it!**  
**Make sure that the contact surface of the Main Gasket on the Cover Rear Assy is not damaged! Otherwise replace a new one.**  
**Make sure the hooks of the Cover Rear Assy are not damaged! Otherwise replace a new one.**





## Reassembly

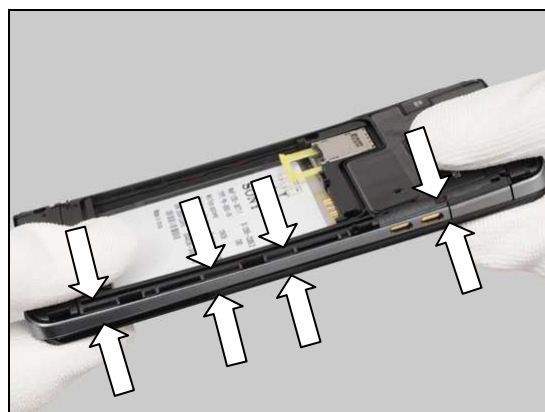
**Make sure that the Cover Rear Assy is aligned as shown in the picture!**



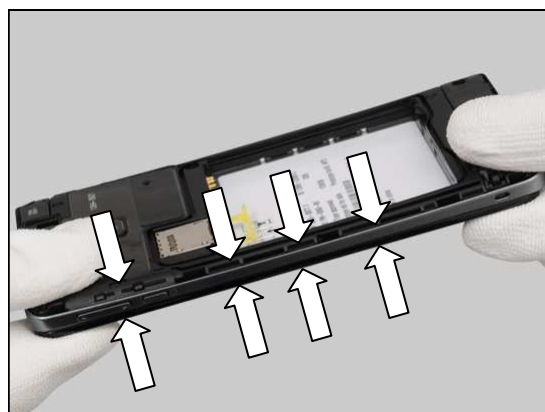
Press to snap the hooks.



Press to snap hooks of this side.



Do the same on the opposite side.



## Reassembly

Do the same on the top side.



Do the same on the bottom side.



Press to snap this hook as shown in the picture.



Press to snap this hook as shown in the picture.





## Reassembly

Press to secure the flash LED position as shown in the picture.



Gently push the Card Connector Tray into its cavity.



Apply 14Ncm±2Ncm torque when tightening these two screws with Bits (JCIS No 0).



Apply 12Ncm±2Ncm torque when tightening these four screws with Bits (T5).



## Reassembly

### 5.3.3 Battery

Gently place the battery into its cavity.



Press to secure its position.



### 5.3.4 Cover Battery Assy

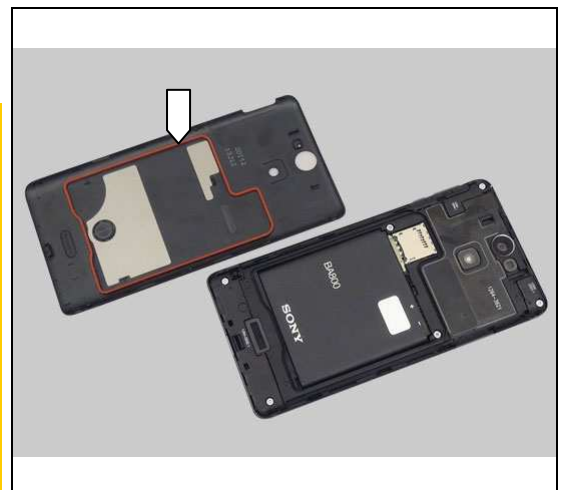
Prepare the Cover Battery Assy and the unit.

**Use an air gun to clean the sealing rubber on the Cover Battery Assy and its cavity on the Cover Rear Assy as shown in the picture!**

**Make sure that the sealing rubber on the Cover Battery Assy is clean and no dirt, particles and fiber attached on it and is not damaged! Otherwise replace a new Cover Battery Assy.**

**Make sure the hooks of the Cover Battery Assy are not damaged! Otherwise replace a new Cover Battery Assy.**

**Make sure that the cavity on the Cover Rear Assy is not damaged! Otherwise replace a new Cover Rear Assy.**



Place the Cover Battery Assy on the correct position from the top side.

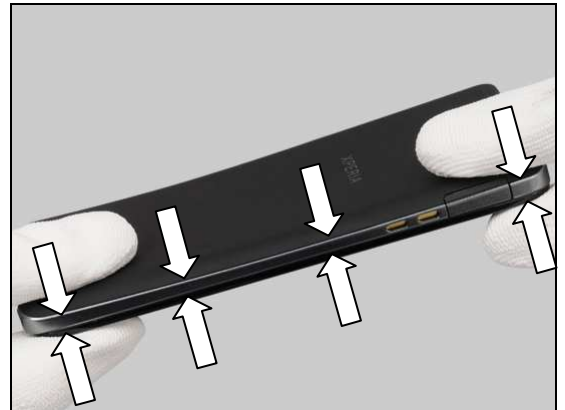


## Reassembly

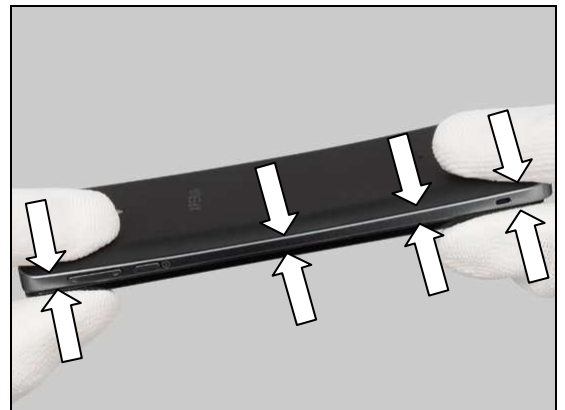
Press to snap the hooks.



Press to snap hooks of this side.



Do the same on the opposite side.



Press to snap the hooks on the top side.



## Reassembly

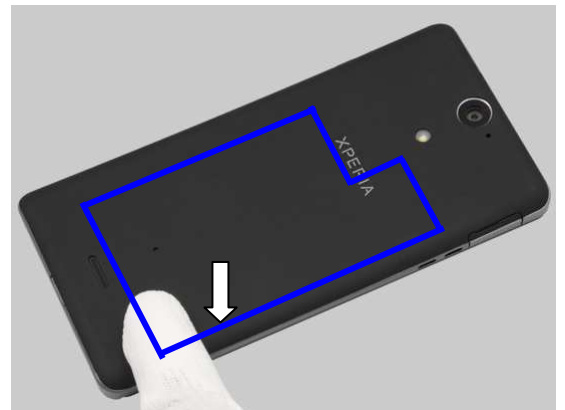
Press to snap the hook on the bottom side.



Press to snap this hook as shown in the picture.



Press along to secure the proper sealing between the Cover Battery Assy and the Cover Rear Assy as shown in the picture.



## Reassembly

### 5.4 Reassembly-LT25c Specific

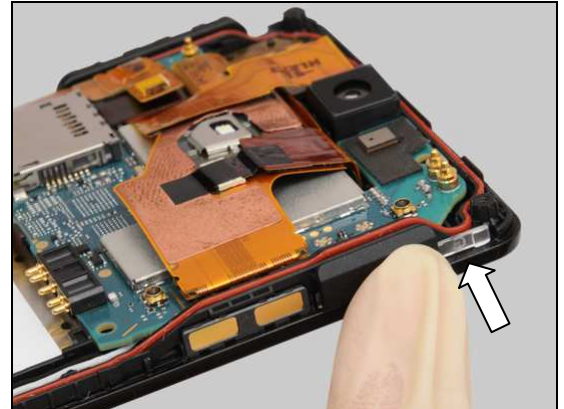
#### 5.4.1 Cap Micro USB

Wear new Finger Cots and place the Cap Micro USB on the correct position.

**Use an air gun to clean the Cap Micro USB and its hole!**  
**Do not touch the sealing rubber of the Cap Micro USB!**  
**Make sure that the Cap Micro USB is clean and no dirt, particles and fiber attached on it and is not damaged!**  
**Otherwise replace a new one.**

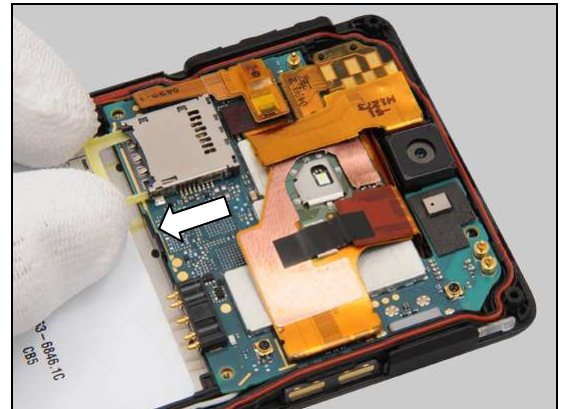


Press to secure its position.



#### 5.4.2 Cover Rear Assy

Gently pull the Card Connector Tray out from its cavity.



Gently place the Cover Rear Assy on the correct position from the left side.

**Use an air gun to clean the Cover Rear Assy!**  
**Make sure that the Cover Rear Assy is clean and no dirt, particles and fiber attached on it!**  
**Make sure that the contact surface of the Main Gasket on the Cover Rear Assy is not damaged! Otherwise replace a new Cover Rear Assy.**  
**Make sure the hooks of the Cover Rear Assy are not damaged! Otherwise replace a new Cover Rear Assy.**





## Reassembly

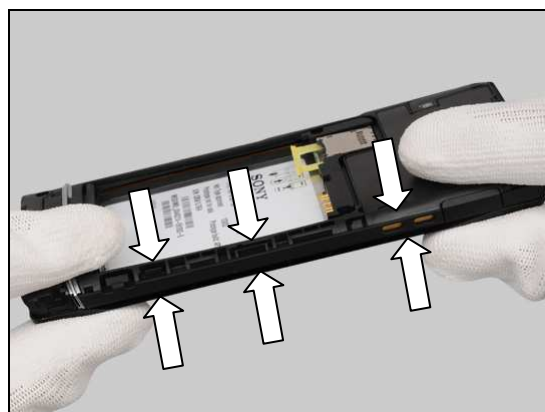
**Make sure the Cover Rear Assy is aligned as shown in the picture!**



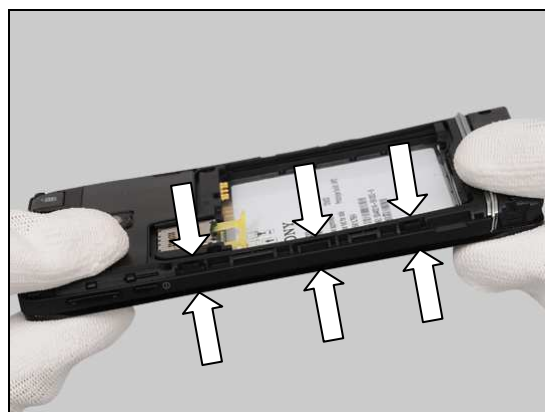
Press to snap the hooks.



Press to snap the hooks on this side.



Do the same on the opposite side.



## Reassembly

Do the same on the top side.



Do the same on the bottom side.



Press to snap this hook as shown in the picture.



Press to snap this hook as shown in the picture.



## Reassembly

Press to secure the flash LED position as shown in the picture.



Gently push the Card Connector Tray into its cavity.



Apply 13Ncm $\pm$ 2Ncm torque when tightening these two screws with Bits (JCIS No 0).



Apply 12Ncm $\pm$ 2Ncm torque when tightening these four screws with Bits (T5).



## Reassembly

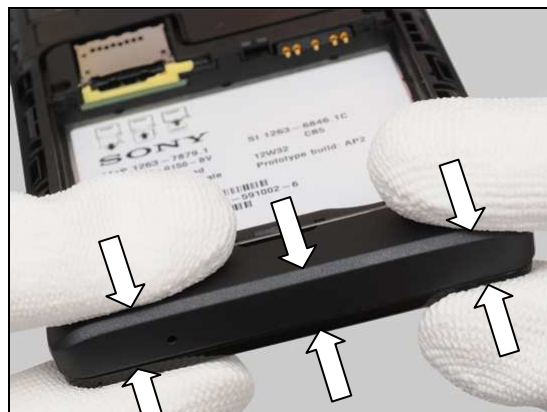
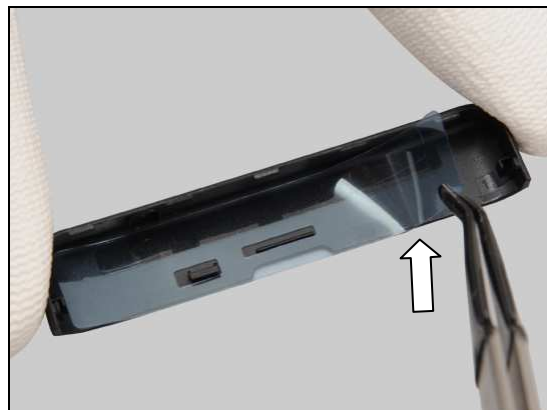
### 5.4.3 Cover Bottom

Prepare a new Cover Bottom and peel off the protective film.

Insert the hooks of both sides at the same time as shown in the picture.

Press to snap the hooks.

**Make sure this side of Cover Bottom properly installed as shown in the picture!**



## Reassembly

**Make sure the other side of Cover Bottom properly installed as shown in the picture!**



Press along to secure the adhesive attachment of the Cover Bottom.



### 5.4.4 Battery

Gently place the battery into its cavity.



Press to secure its position.





## Reassembly

### 5.4.5 Cover Battery Assy

Prepare the Cover Battery Assy and the unit.

**Use an air gun to clean the sealing rubber on the Cover Battery Assy and its cavity on the Cover Rear Assy as shown in the picture!**

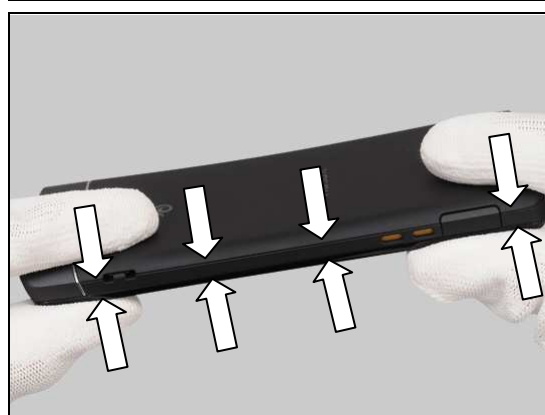
**Make sure that the sealing rubber on the Cover Battery Assy is clean and no dirt, particles and fiber attached on it and is not damaged! Otherwise replace a new Cover Battery Assy.**

**Make sure the hooks of the Cover Battery Assy are not damaged! Otherwise replace a new Cover Battery Assy. Make sure that the cavity on the Cover Rear Assy is not damaged! Otherwise replace a new Cover Rear Assy.**

Place the Cover Battery Assy on the correct position from the top side.

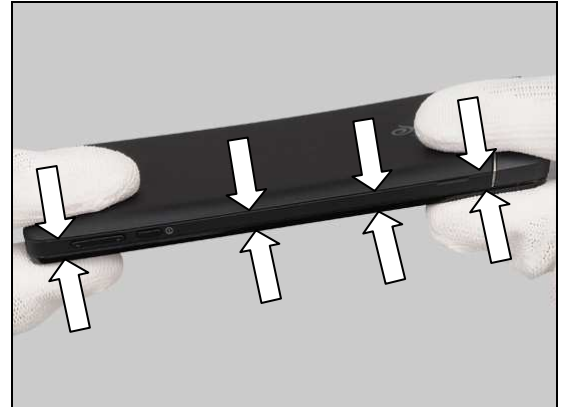
Press to snap the hooks of the Cover Battery Assy.

Press to snap the hooks of this side.



## Reassembly

Do the same on the opposite side.



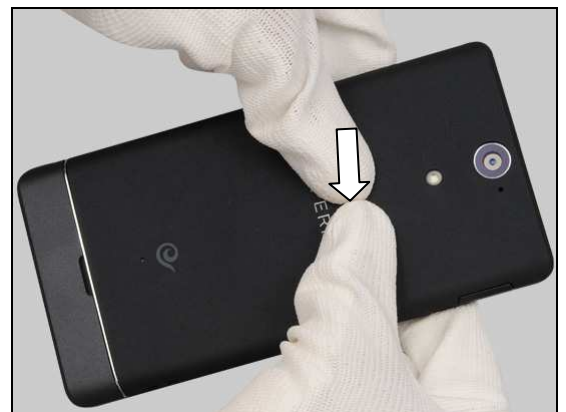
Press to snap the hooks on the top side.



Do the same on the bottom side.

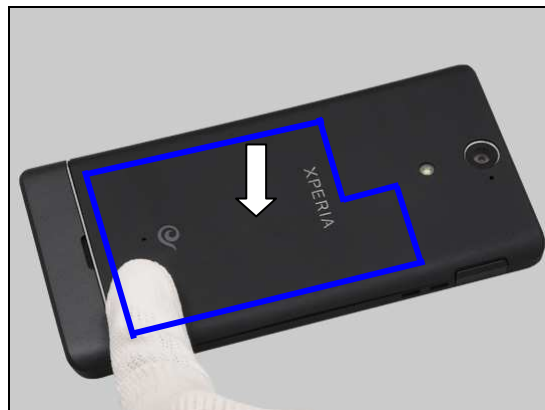


Press to snap this hook as shown in the picture.



## Reassembly

Press along to secure the proper sealing between the Cover Battery Assy and the Cover Rear Assy as shown in the picture.



## 6 Revision History

Rev.	Date	Changes / Comments
1	2012-Nov-16	Initial release
2	2012-Nov-26	No change
3	2012-Dec-7	Update chapter 4.1.21
4	2012-Dec-27	Add Replacement 4.1.17, update 4.1.21 and 5.2.1
5	2013-Feb-25	Add "and LCD reset" in the notice of chapter 4.1.6 and 4.1.21